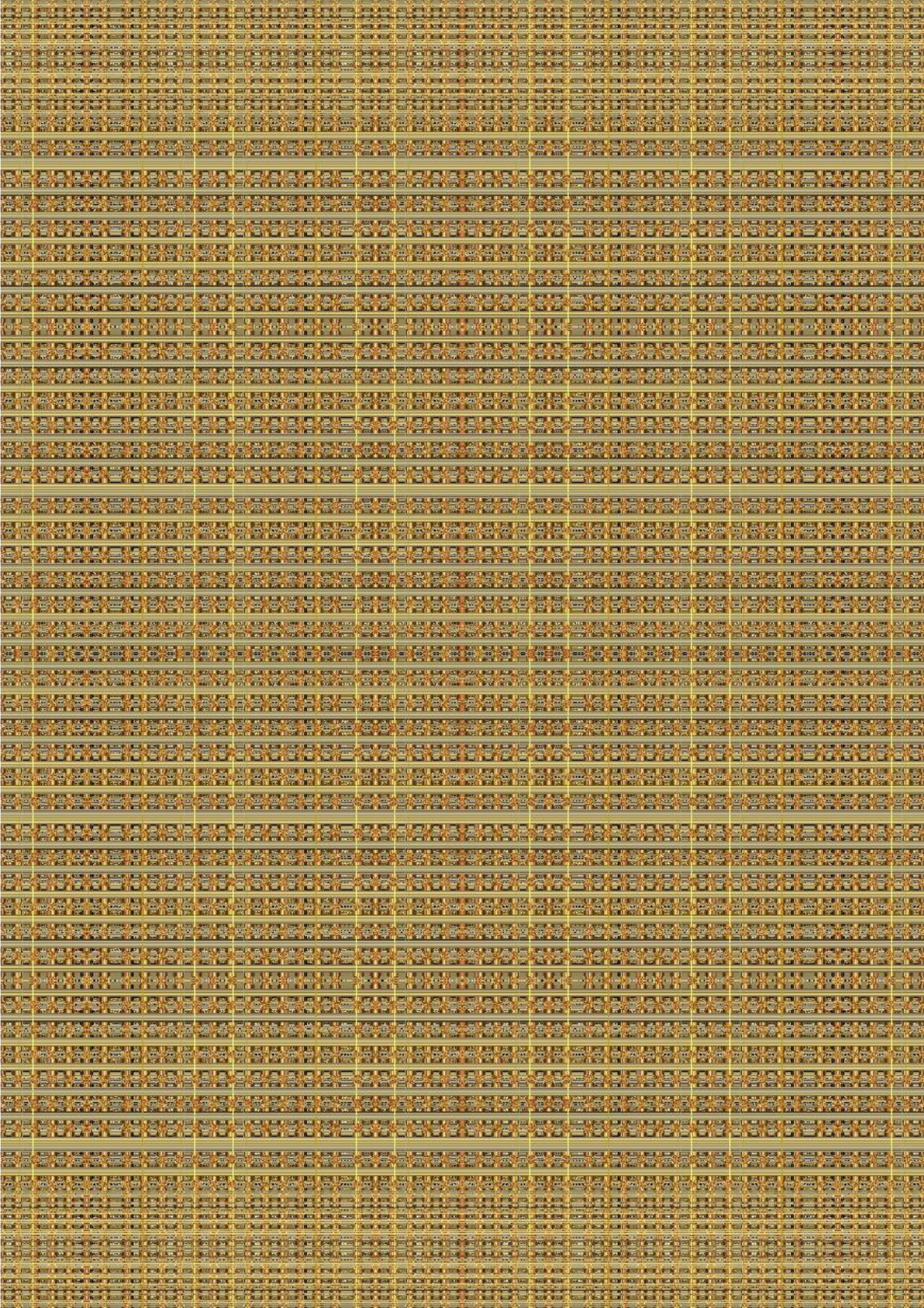


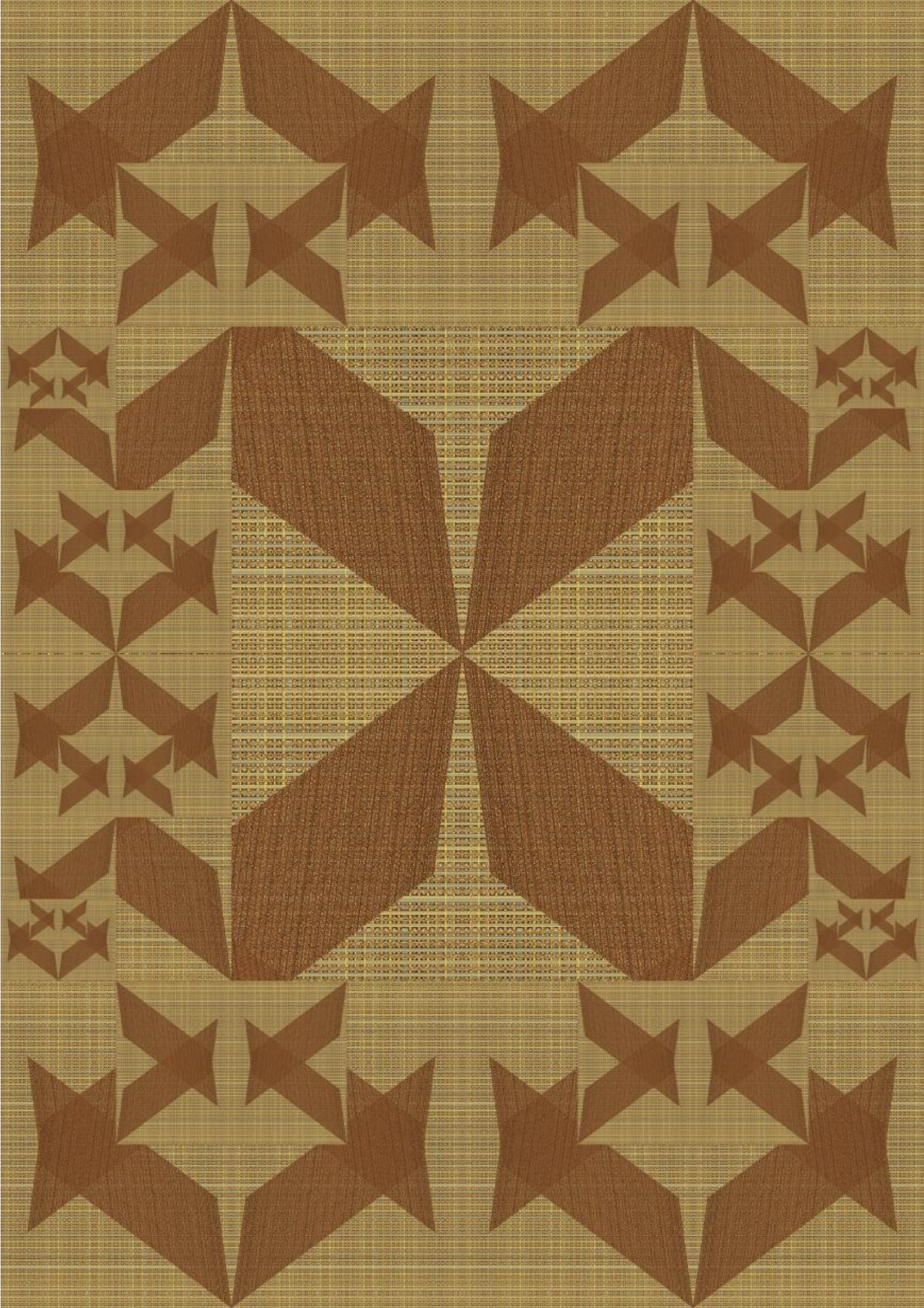


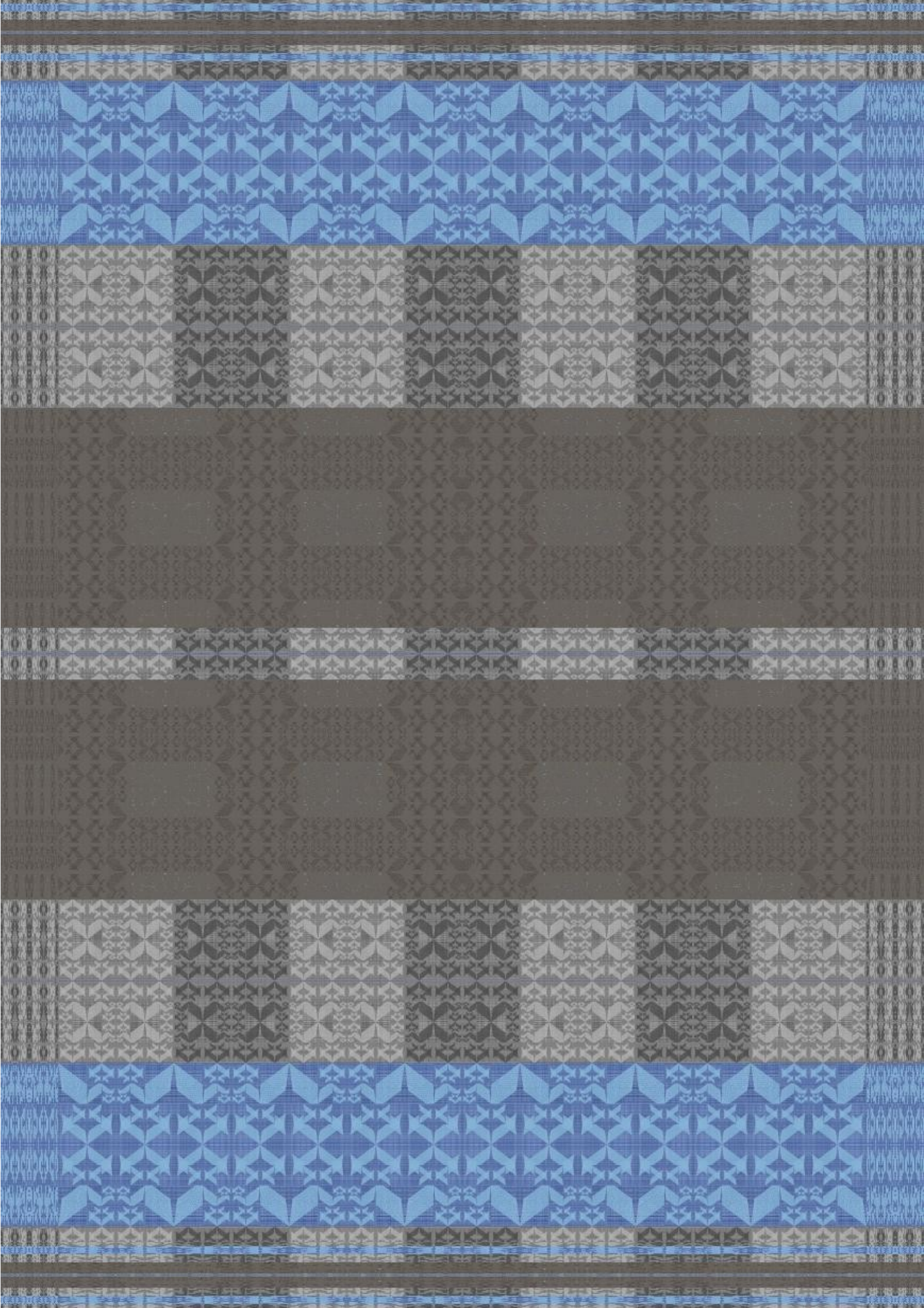
FUNDAÇÃO
CALOUSTE
GULBENKIAN

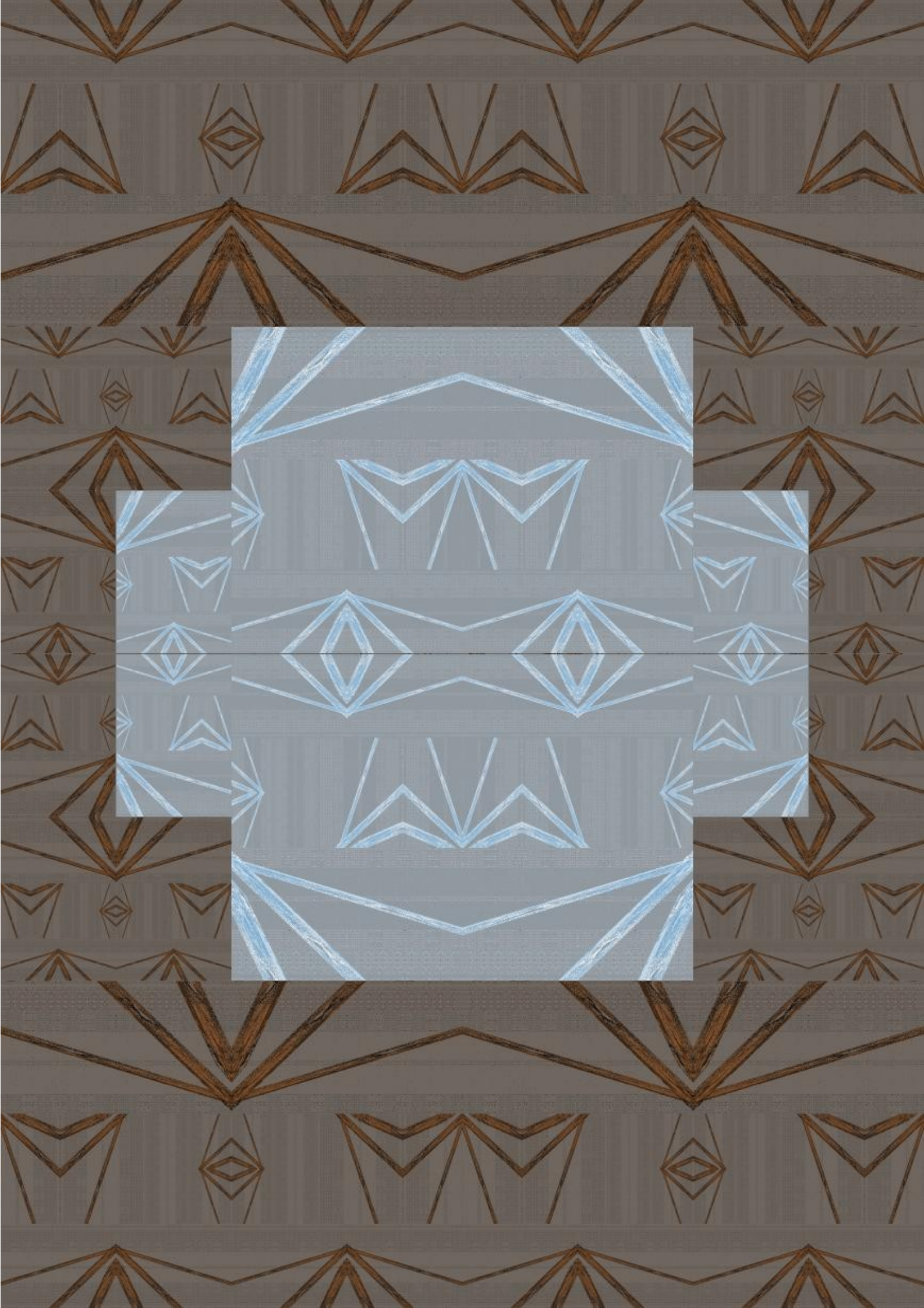


BODY

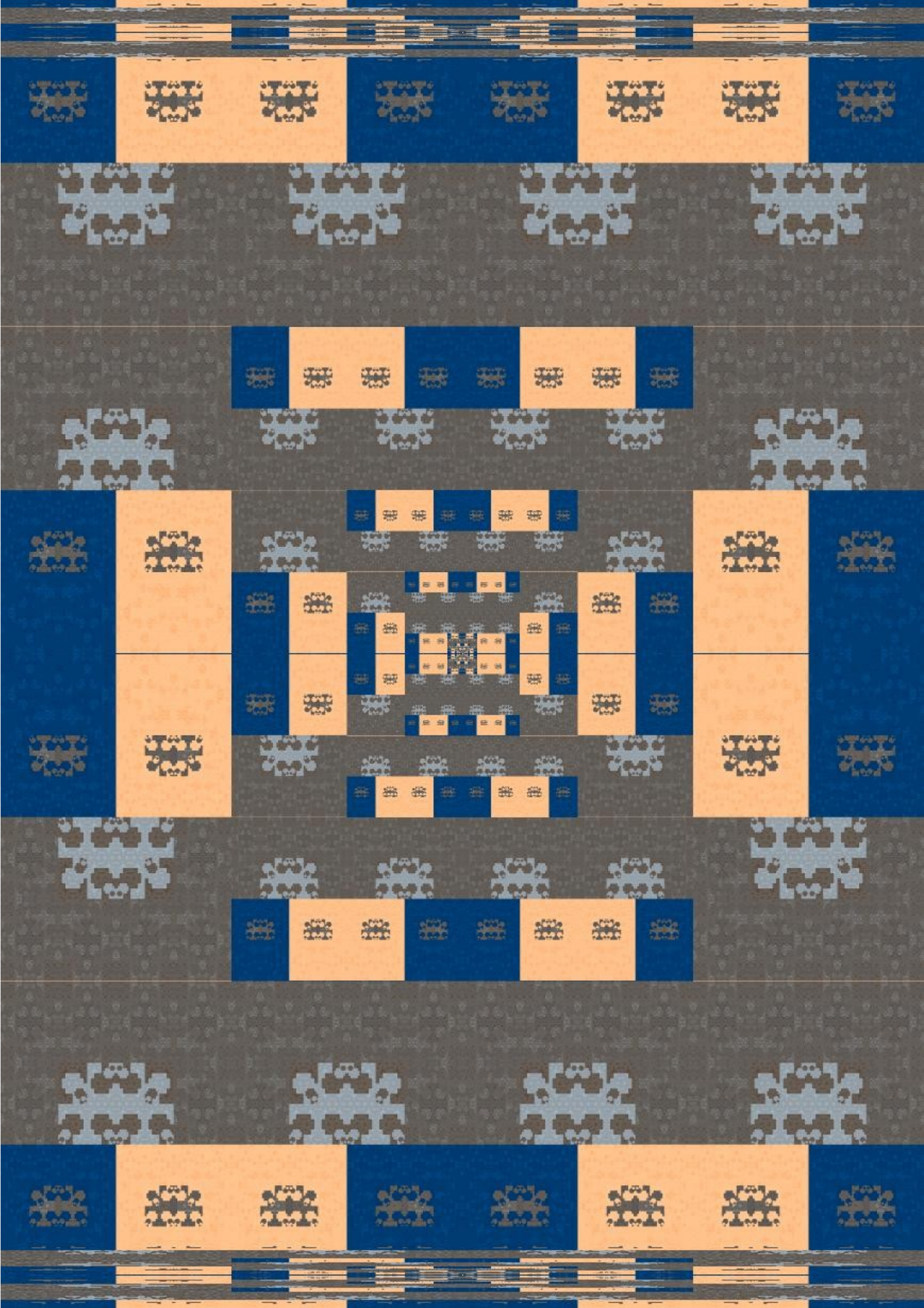




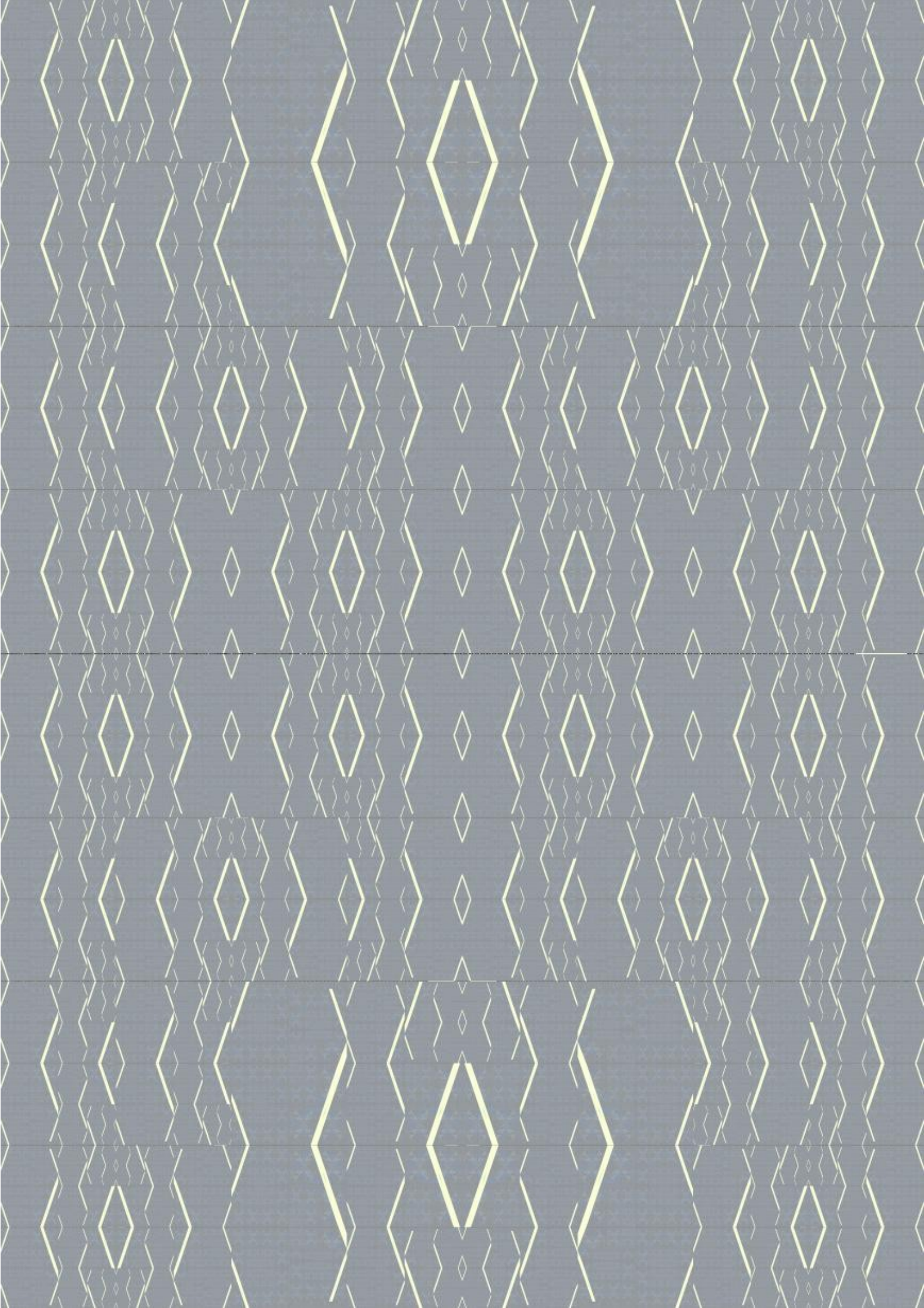


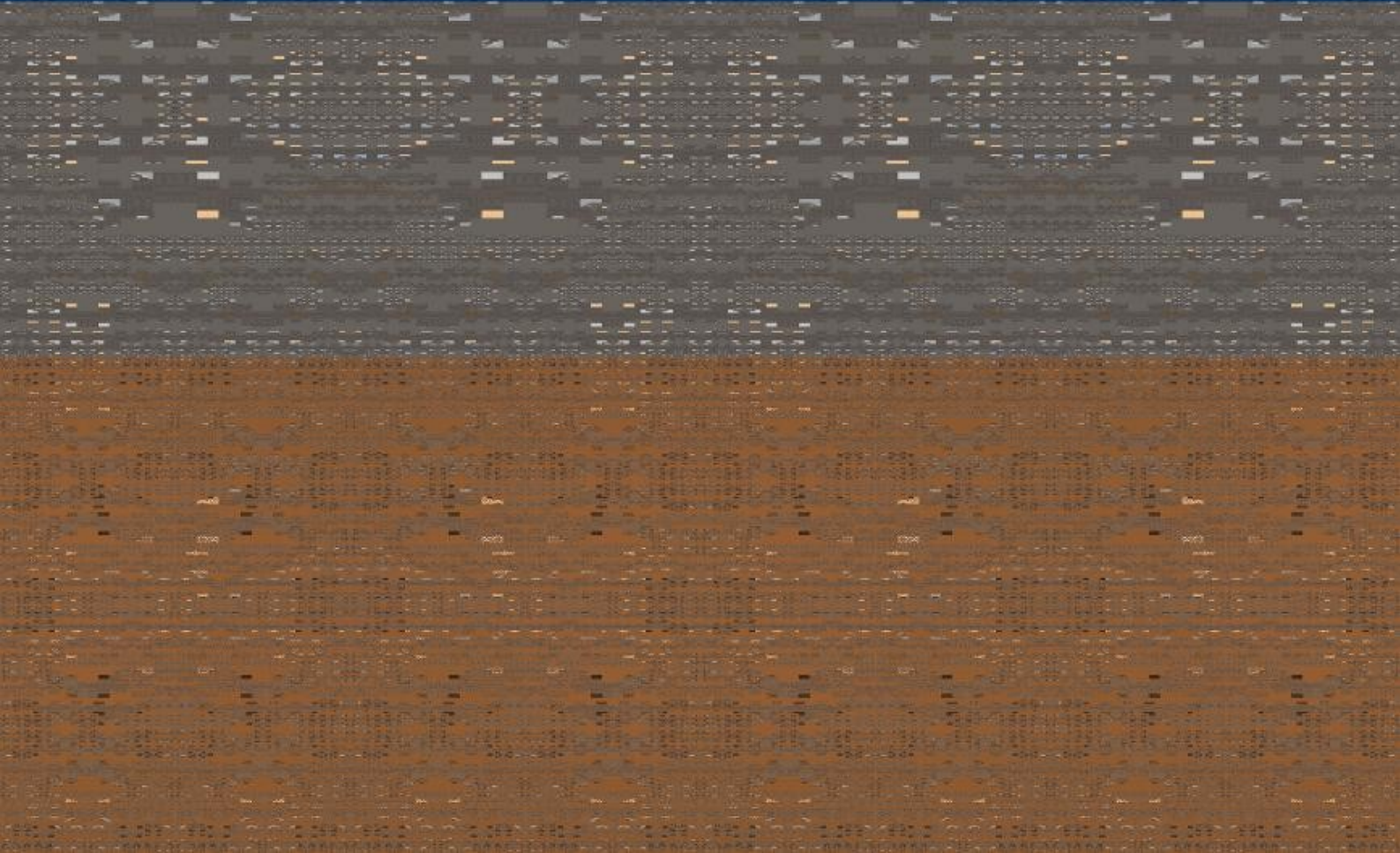
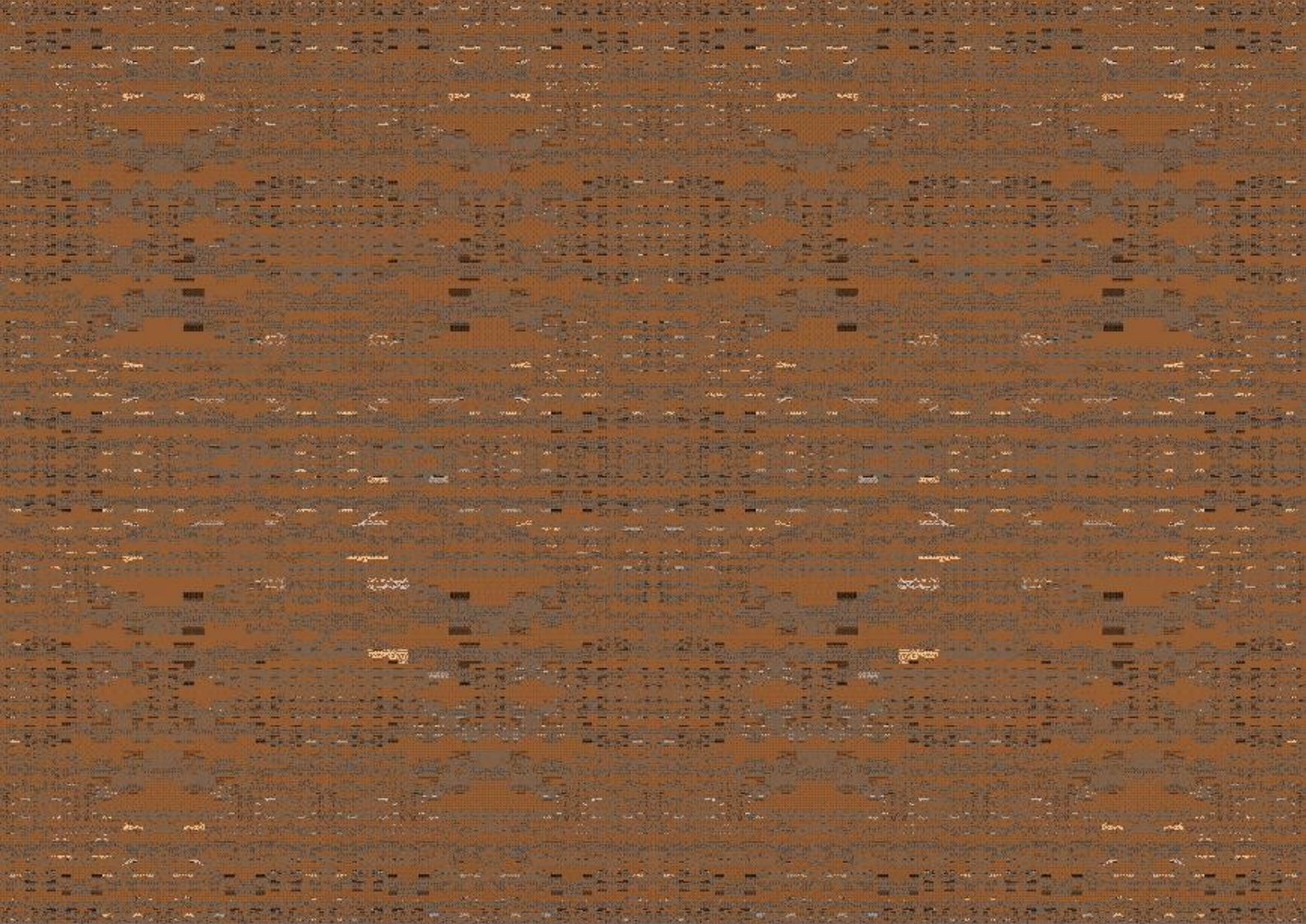


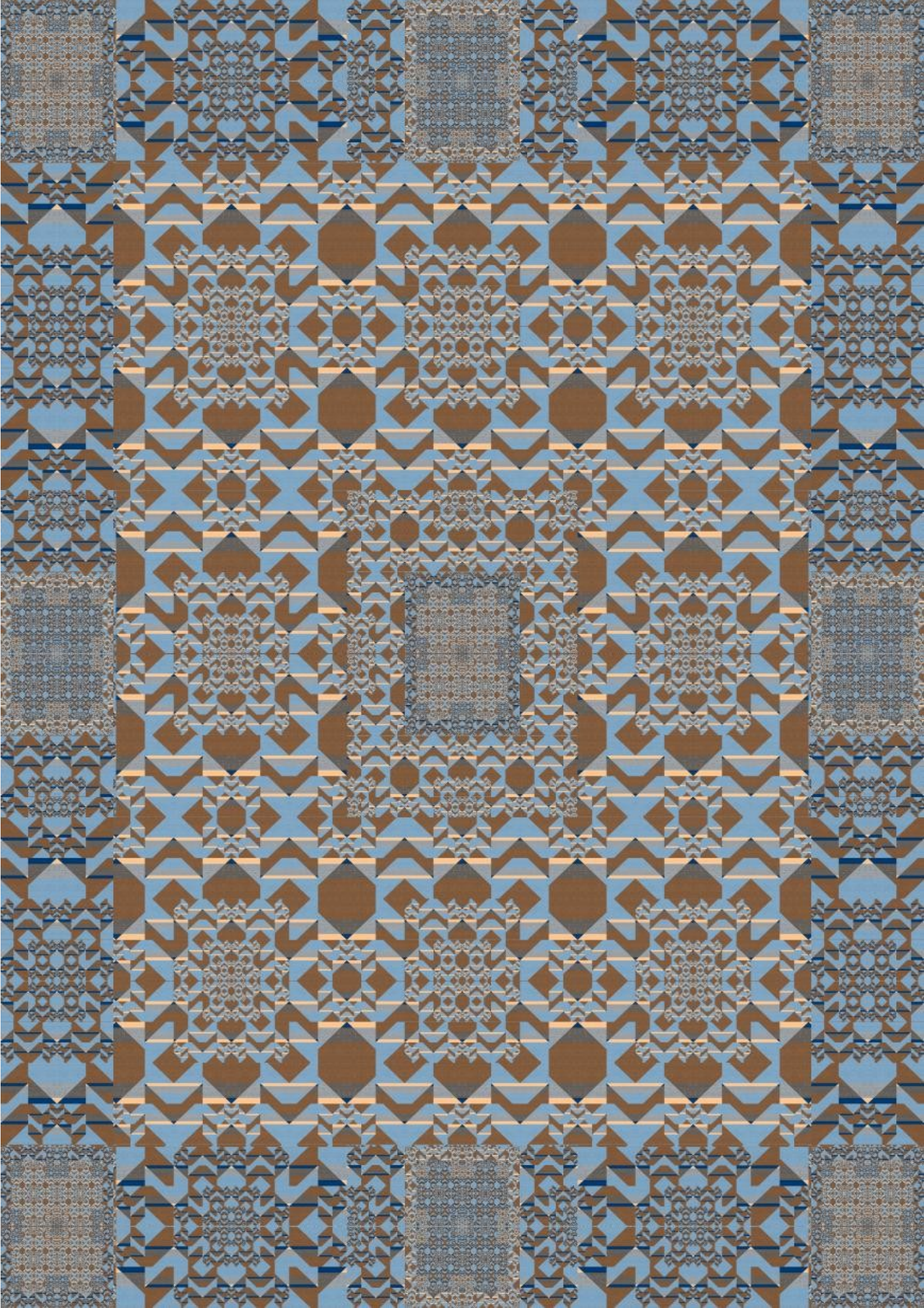


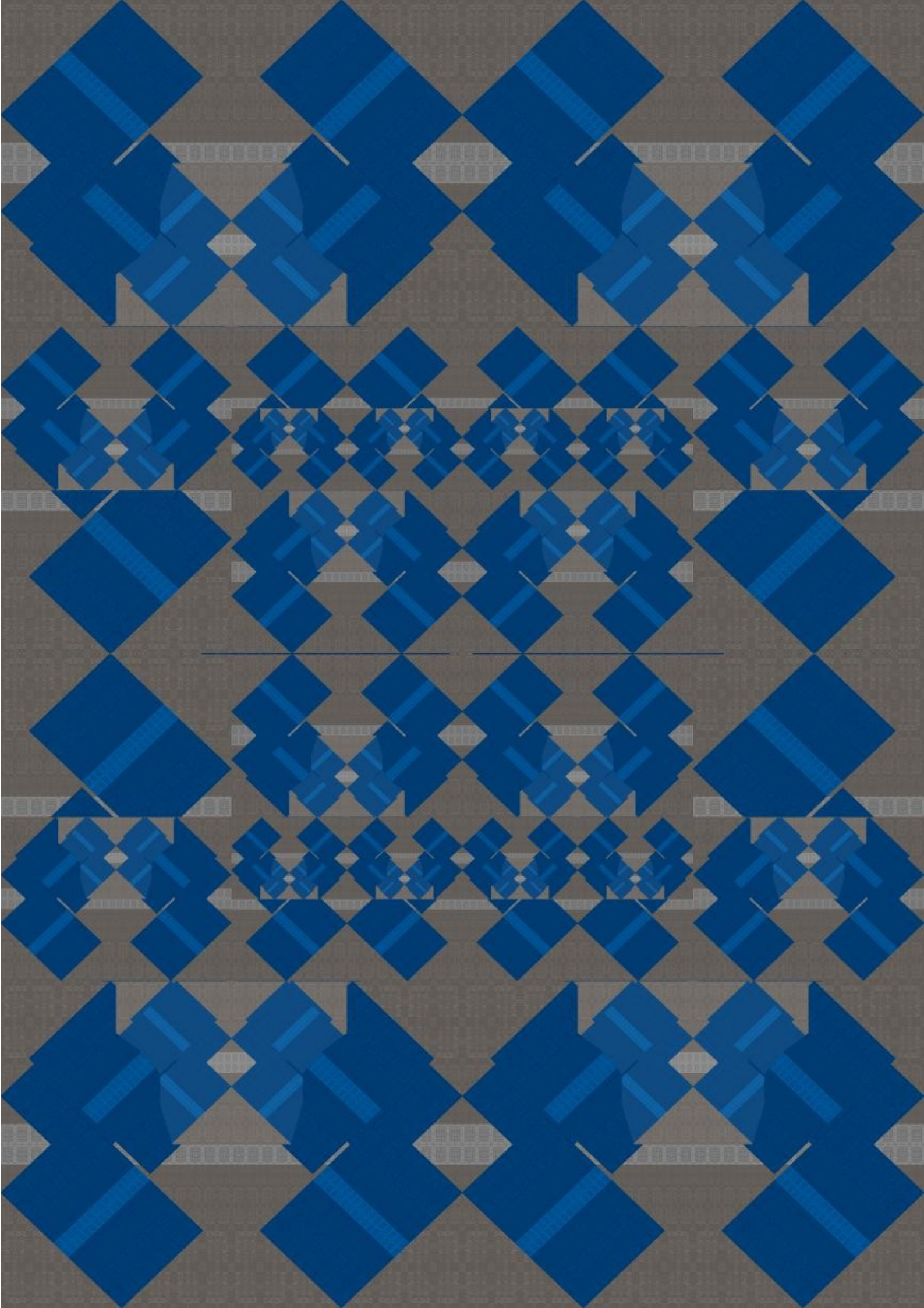


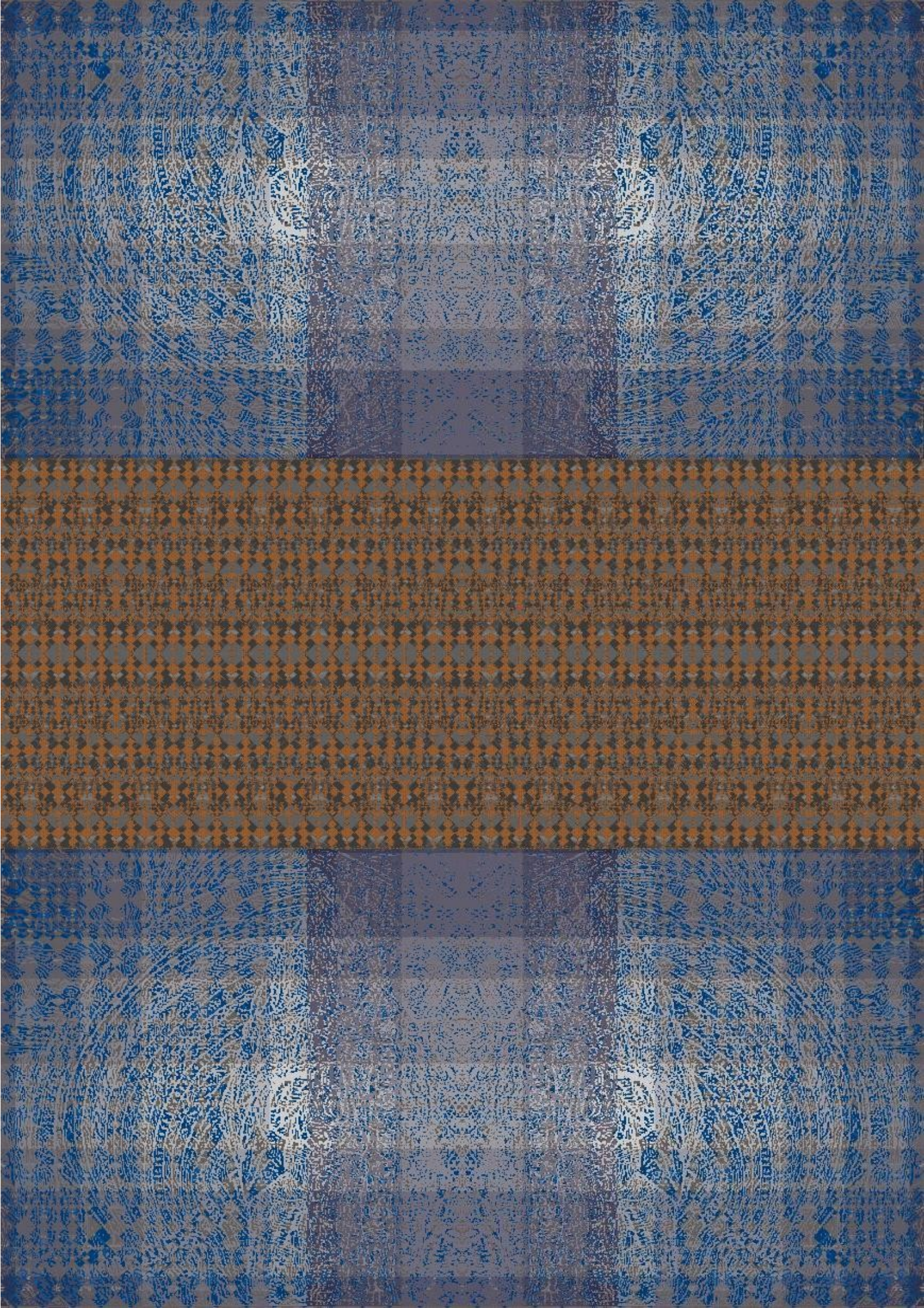


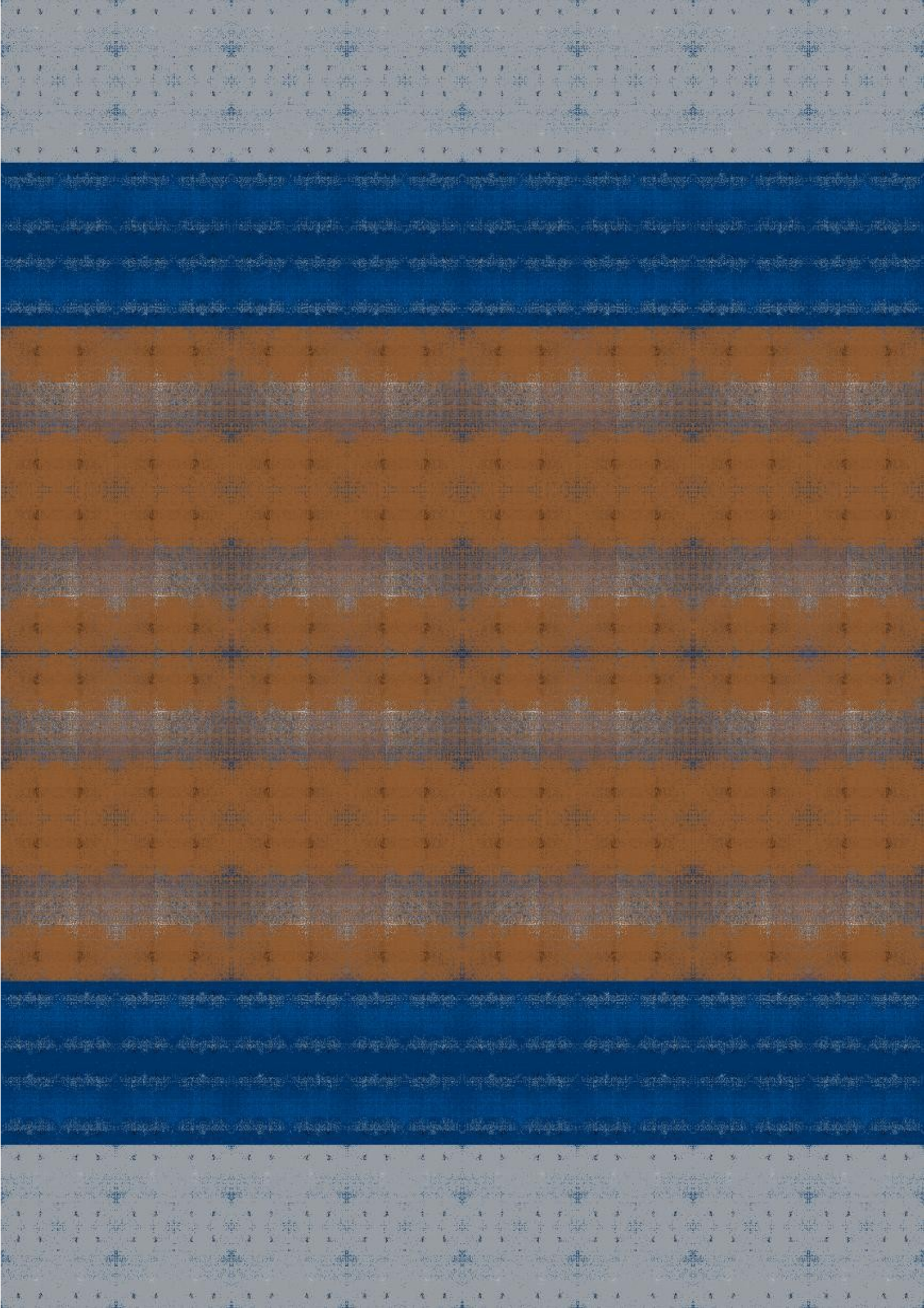


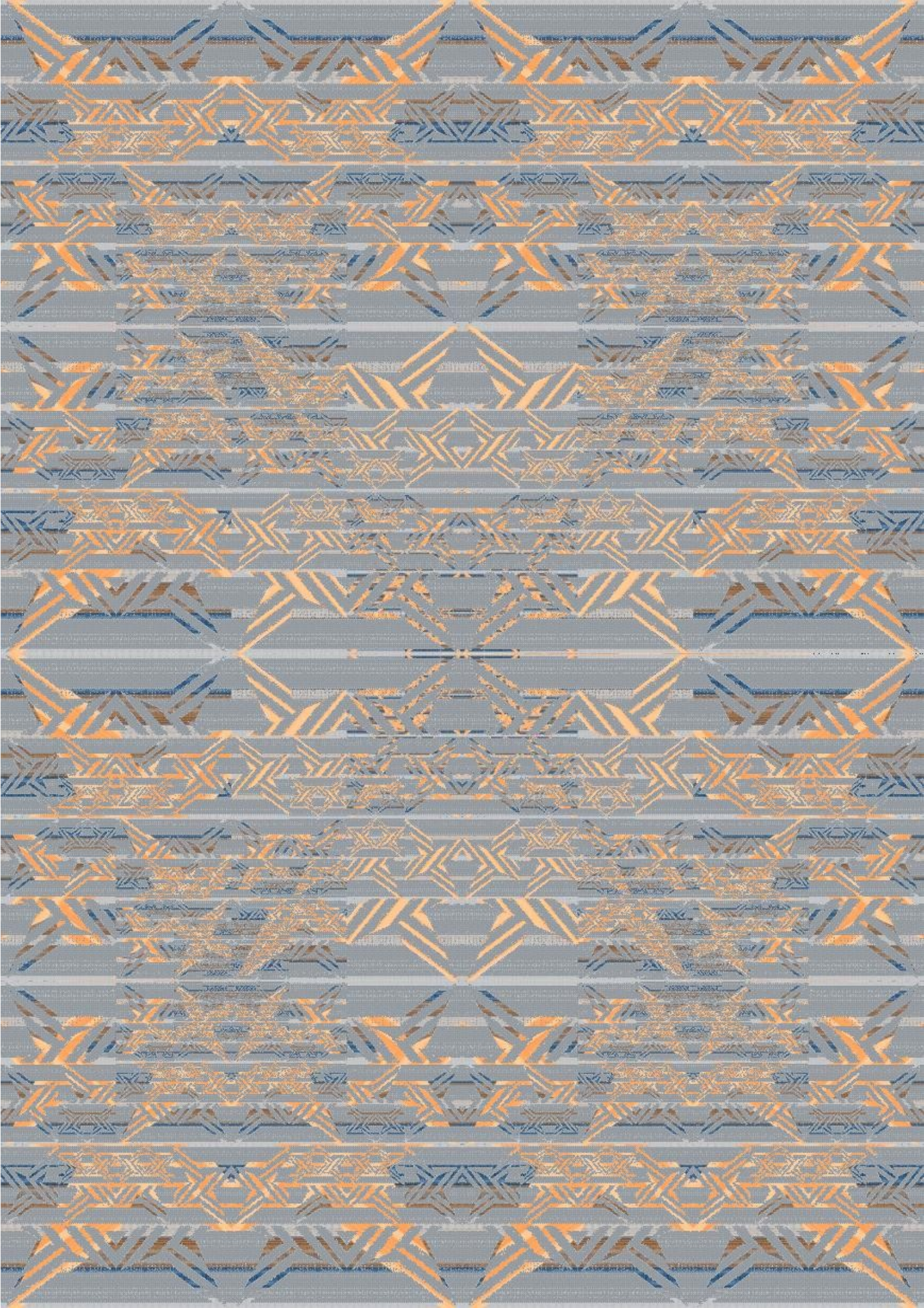


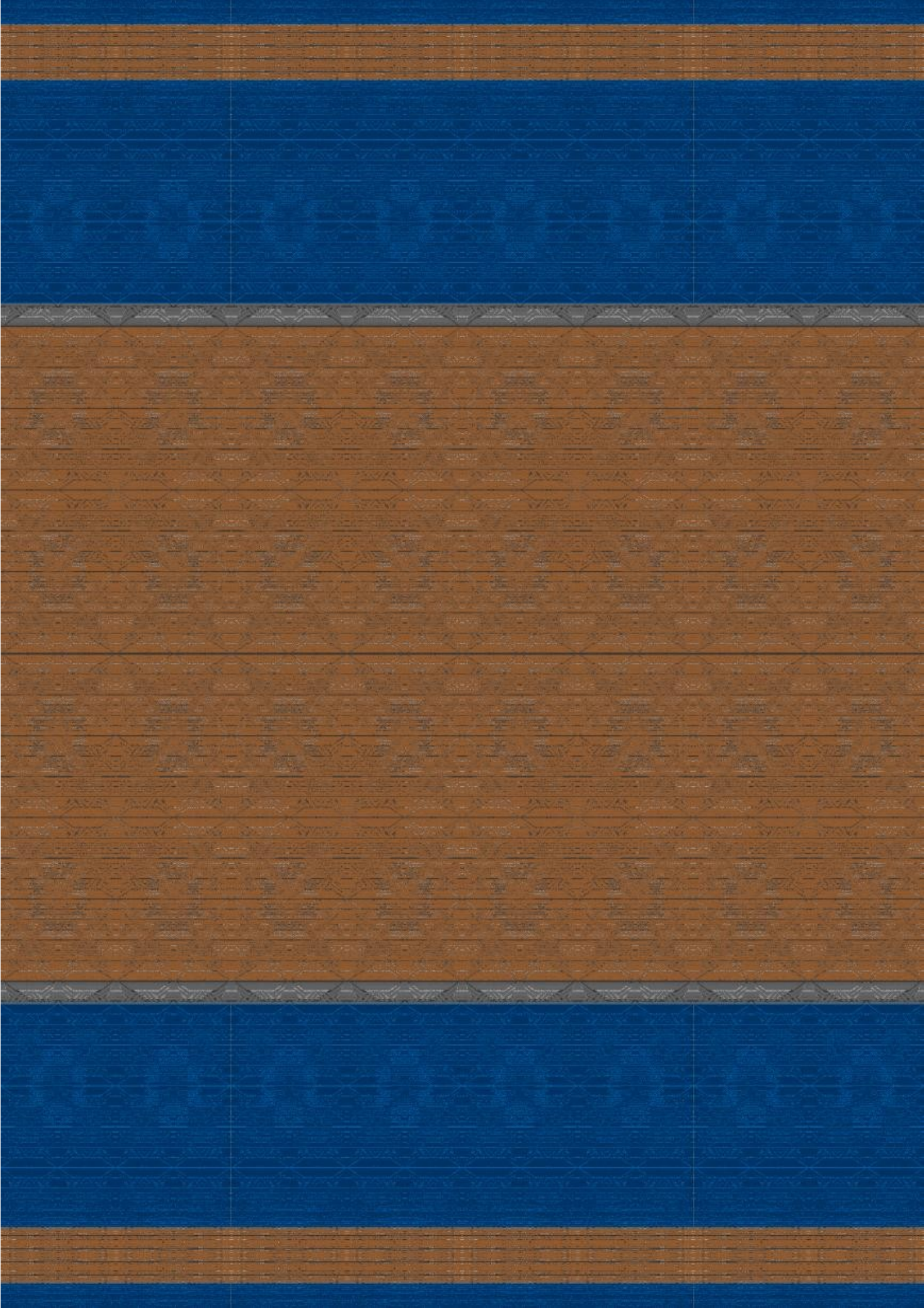


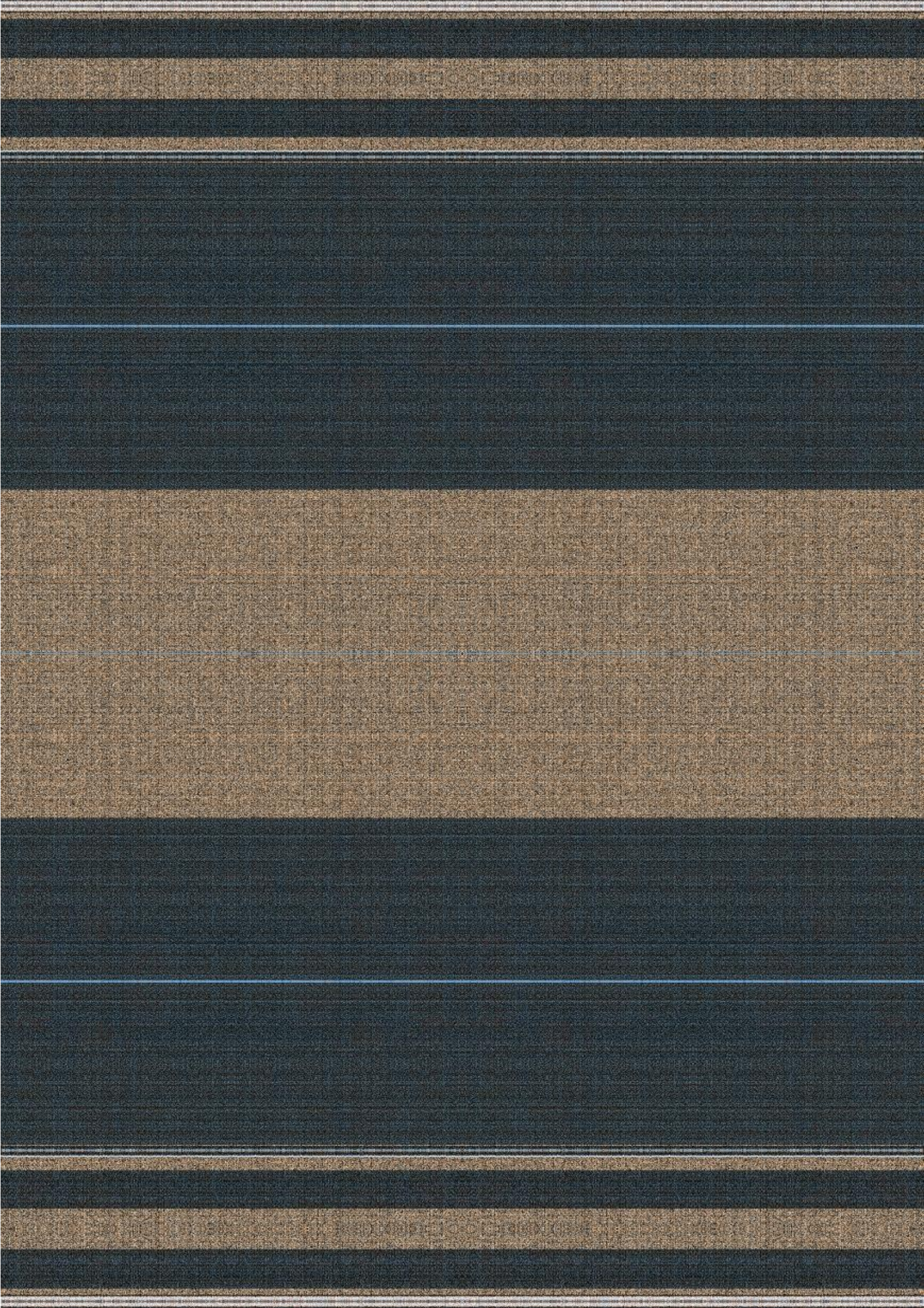


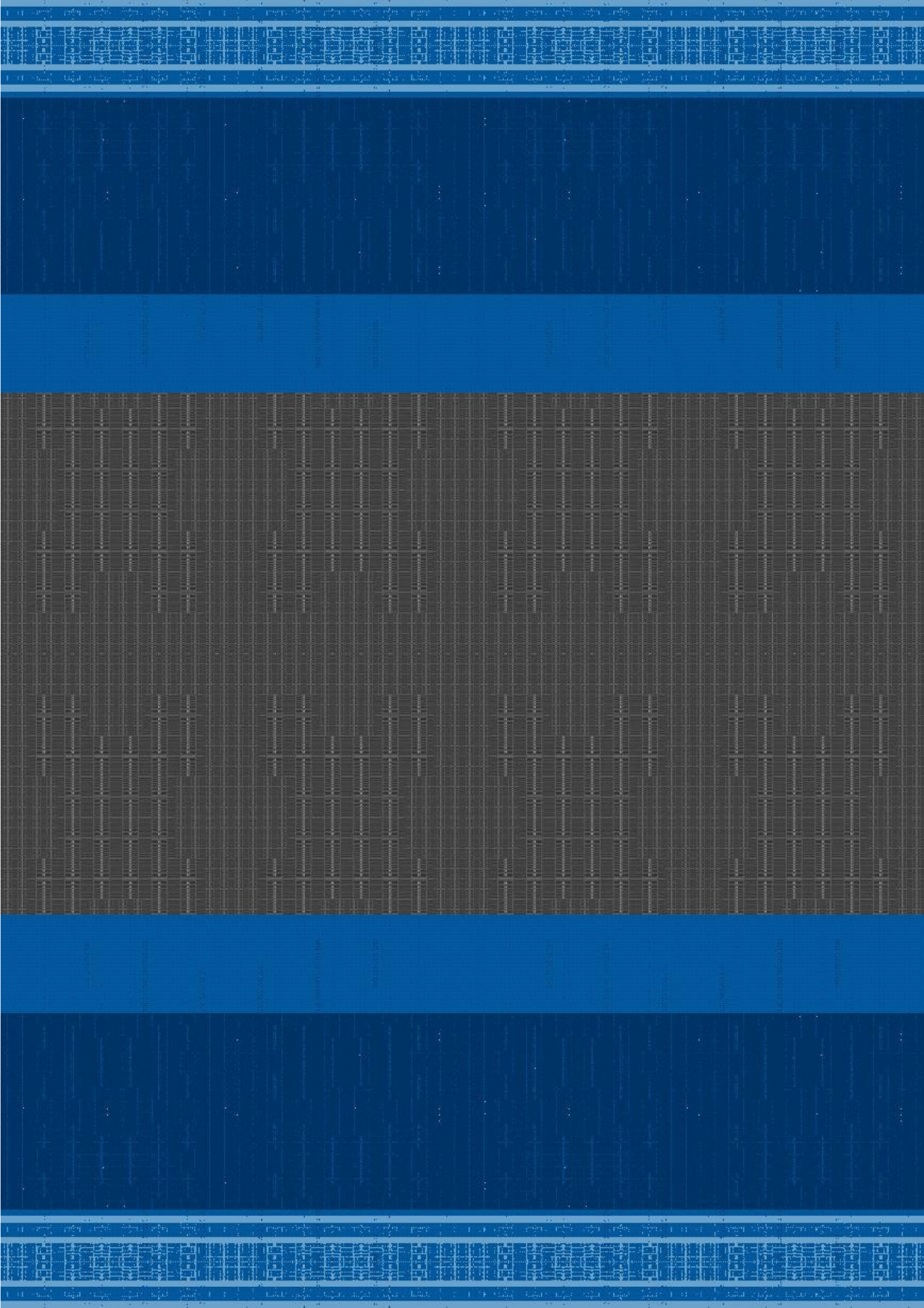














Near a star perception new line organic foundation.

The projection of this image work, are relative to an communication process of the fluent material, here the condition are base the foundation structure as the representation of the font relative composition construe auto natural ways of an projection of vision, and here an operative of the functions that cover the property here in negotiation in a free universal creations, there are aspect in relation to the principal port, as an of the panel structure as substantial are saw the energy that in conjugal refer the grow of culture in sense here of an justice to the body, the action are to gain the language that direct goes in the base of the nature in our relations, the configuration of image here above the matter alive ware in exposition, are base to construe an structural process that can here define the real actions over above the official recognize of evidence to set this conceptualization a reinforcement, as normal are the reception of the factual prove on vault volume conditions.