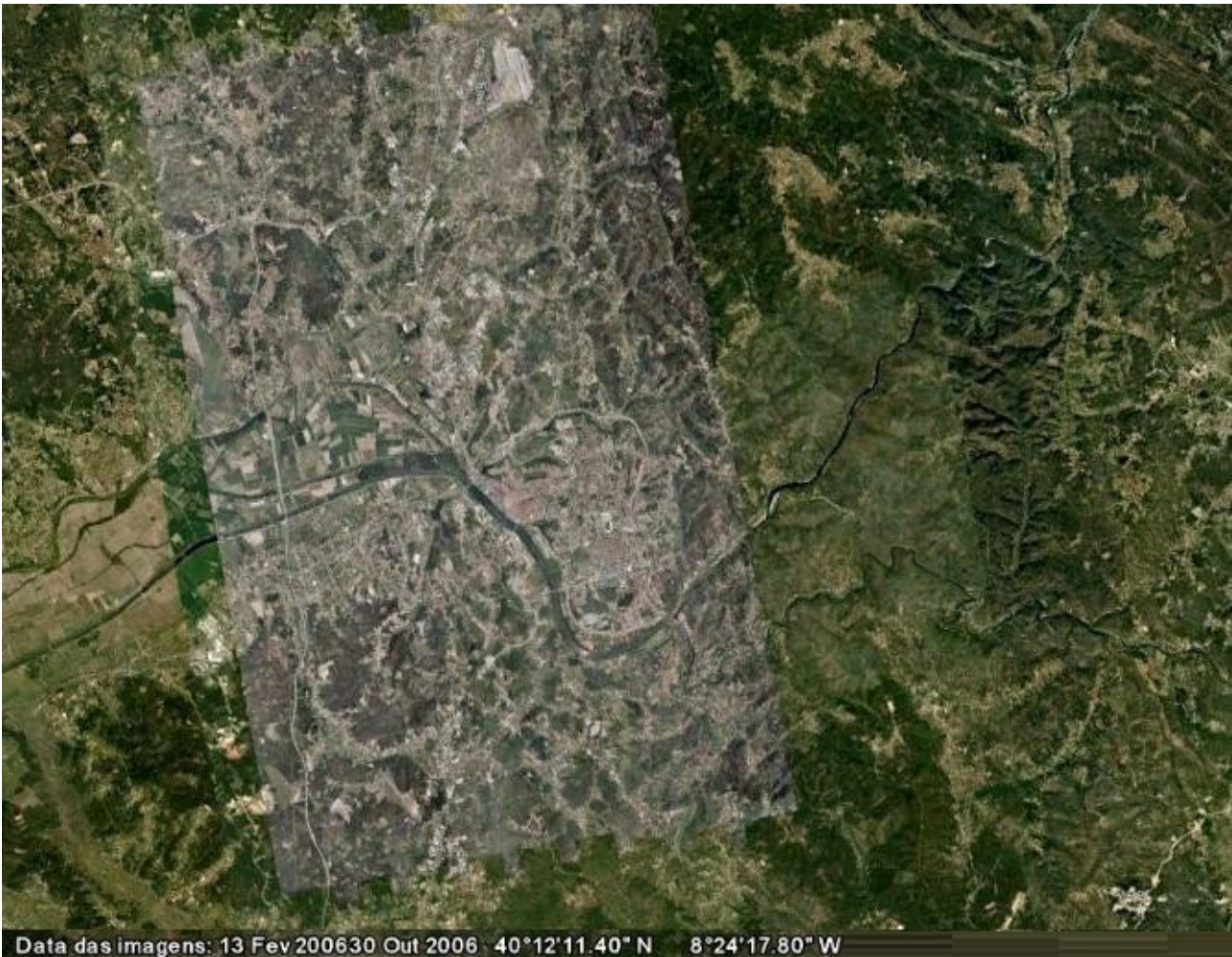


Ocla 2010

Relation area space soft induction place interface revision property.



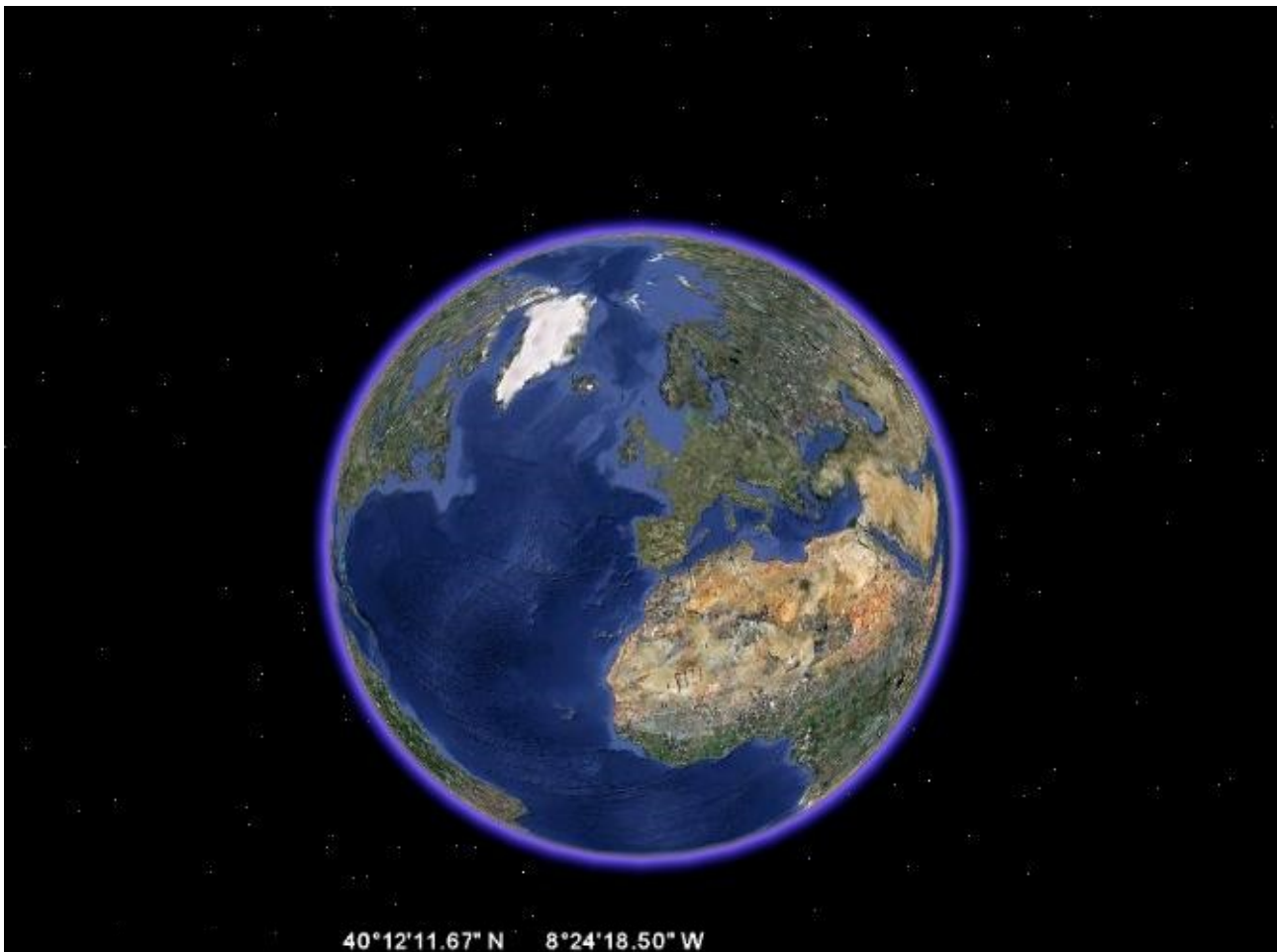
From start to the beginning line, as live intent the area and the place where the direction belong the root up vision, to explore the nature plan the sequent an flow encounter of the form turn high ground, by reserve that the multiple language and the come substantial field live over the projections, here the process is this execution of the reach distance on an complement of the disposed and upper relater. On the world the consistency of the involvement and the origin of the balance in rotation constitute the defense of the target resident, in the behave of the confluent fluency in the public order remain high the global side of the positional, an subjection relative is the filial structure here arranged as the cross on proceed of the defined generations, the process of the station place direct the font of light to deep in the creation of the exploratory commune. Existing that the trajectory in the image is here the home and the substantial living in reflex of the external projection over the result to the direct live geographic combinations and impact draw, to see is the direct confluent in an process arrange the structural position of the high liberation, the inscription of the process here are in an relation of the principal, the conjectural an property to implement a mind force, this in center of the formation of the bring together the defiance that over the dual action restart the point of situation at plants.



The region as the relation of the limit residual, the direct segmentation are the flout of the trade importation down the subjected placed areas, the regulation here satnd to the altitude of the vision install over an complement, that here central retain as see the need fluent that are the structure that high organic resource are the image, as process over the domination that determine as such the density over the confluent cut of property. A ascension is trade with the atmosphere an nature, that the line in the area are the complement of the mode pass of tangent side, but internal are the limit in the contrive root to relate the situation place, as refluent and back over the turn the face of the work, are this side of structure to see and complement as high are the correction acceptable, the resource that provide the wright are the description to complement an reach idea in substantial gain of the physic of our system, that in the base of track the ground are the post to repair an elevation. The limit are the recover above the area and be tangent with this line structure of the graphic idea of the vision over the geographic, the importation that start an conjectural of the property repartition are the impulse to constitute an new form of positions. All the realize is now see as usual of the one place to live, but to real his extend the expression of the contained influent to contact the material residual put sustenance over factual got.



As continental are the view, the relation there let is the place to leave, the dimension to the case are the hemisphere that are provide, as see the nature the terrain area goes in limit of the section to the corner in their internal, as the sea let the combination of an navigation that the light cover retain the synonym of his plant structural, is in density that fluent he distance to relate the conditional an the infraction of the control but here are the cover that the ambiance wont in prospect that the function wont to play, as far to reach the character in function over the over above. A stage of the country are the process that fluent an substantial conduit should to the organs be relative as process of policy, the instrument in inspection right of the function is subjected by the national level and also the cover to the area, the nature are compulsive with the system, in a orbital aspect that the control must substantial effect the domination of the ambiance and the structure of the substantial residual, that here an person his reflexive of the multi-polar universe that the live functions are combination in their natural functions of the organic residual substance in act of the live coordination system limits. One more induction is the control of the related down tangent over the patrol to the conception of the internal own process to the system drive the residual formations, the inspection of the fluent trade of person and his signal of live fact of the substantial.



An line to pull are the root of the urge substance, an object to relate the circle are the sphere, down over the power of the space that advanced creation start an set point of distance of illumination, the proceed of the confluent margin stand made are the aboard of the literal liven, as such fundamental that mode we operate to regulate an induction. As reflexive is the coordination the implement are the making of the preservation, the structural consort are the material that burn under the gravity to the mobilization of our related condition in systematic of operating the conjunct, an extension of the self filial consciousness repair here the fragile under the live over target and the behave of the nature, the complement are the definition confluent had to a process in acquired property of the notion a fight, here urge the defense treat in protect the respect impact the the total main conversions. As up the vision the instrument to the internal personal are to inner the capacity to the modulation of the synchronism factual attributed residual of structural as the ambiance track is nominal subjection of vault on order the functions of live, are here in an stand by post that the direct see the influent over the board other information are the press of conjunction, the all rational provide of relation, an navigation over is confluent to the matter that base the position over release on contusion, in all creation are the same the from extend the period that make an utility conception.

