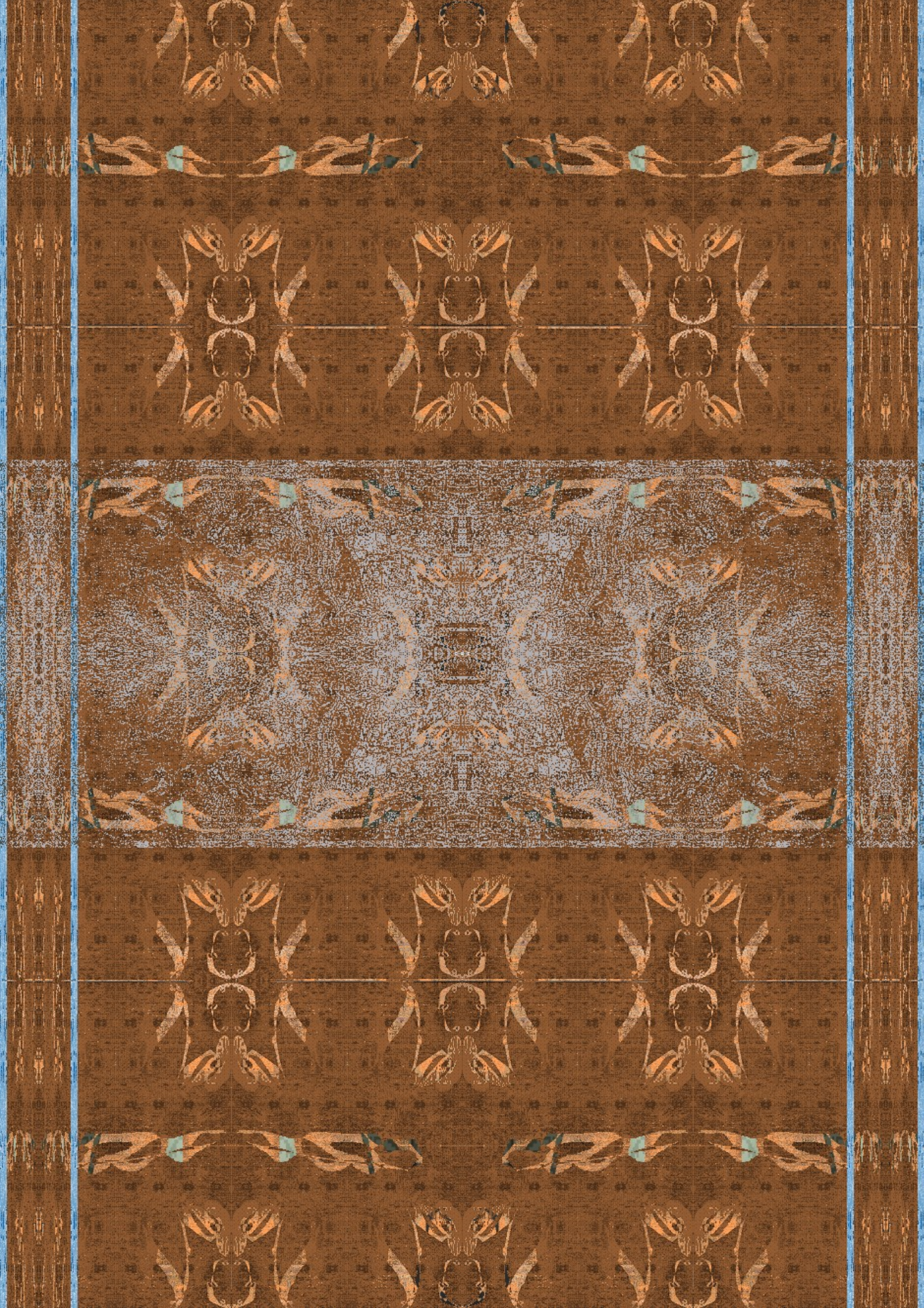
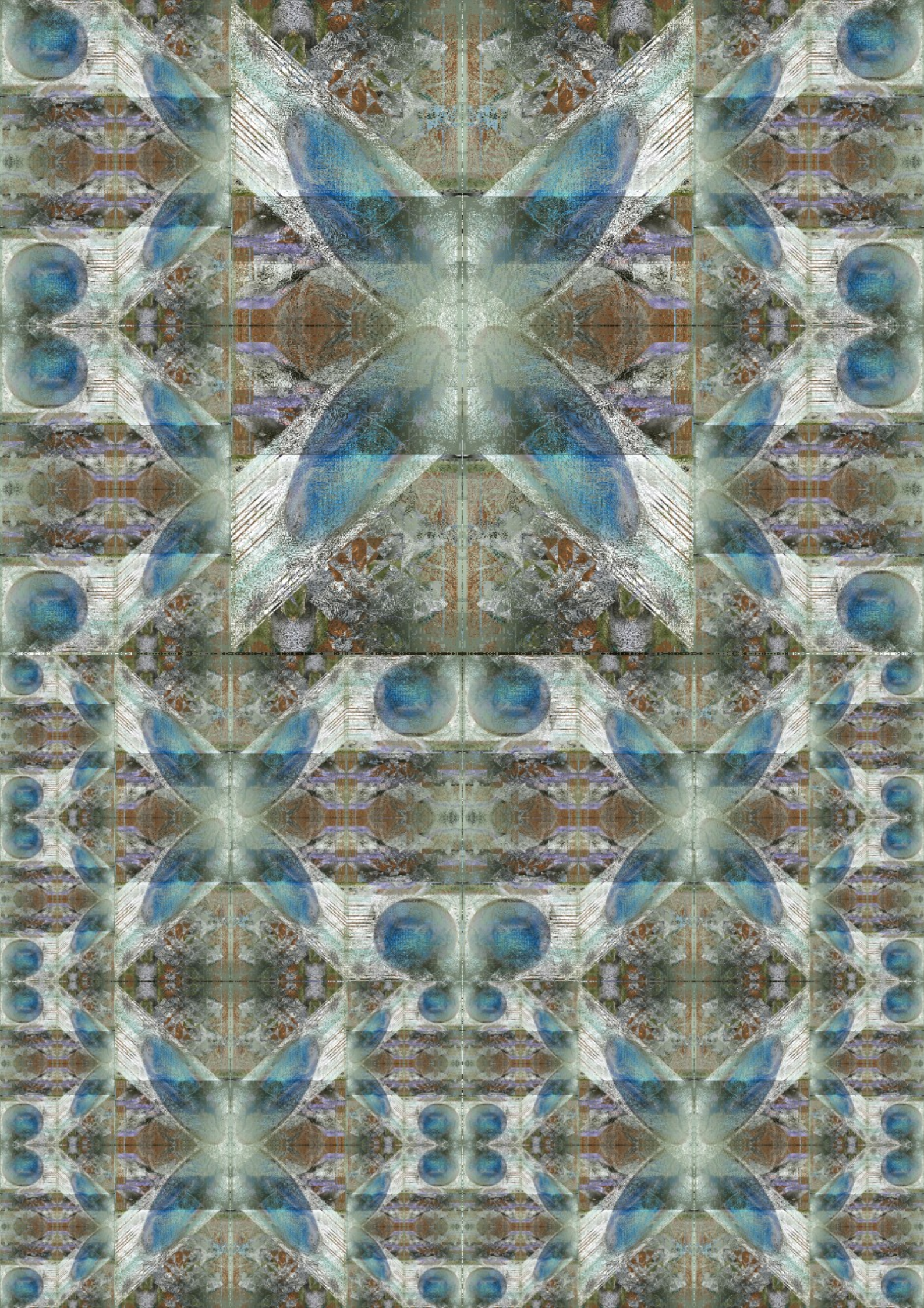


OUT

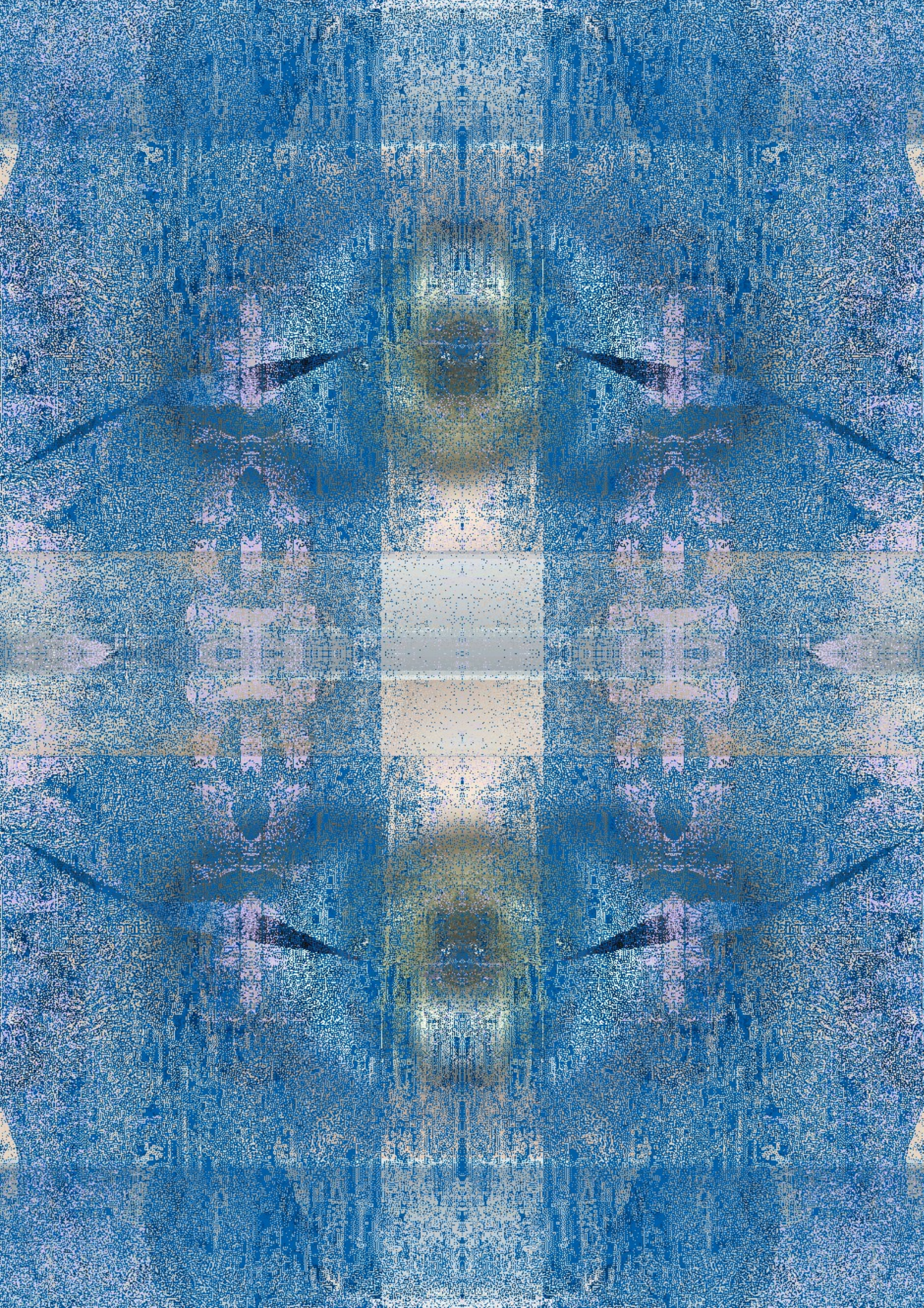




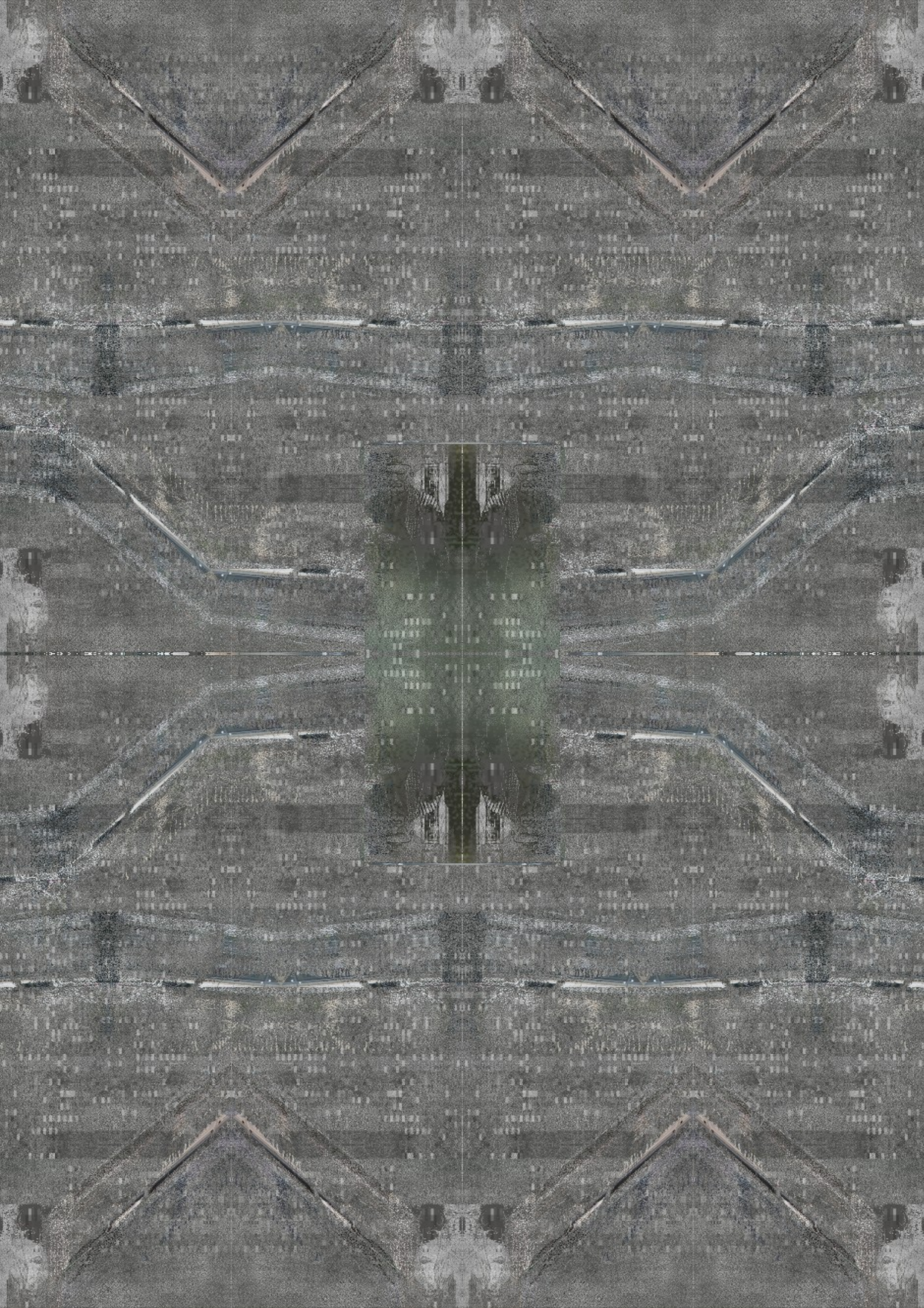


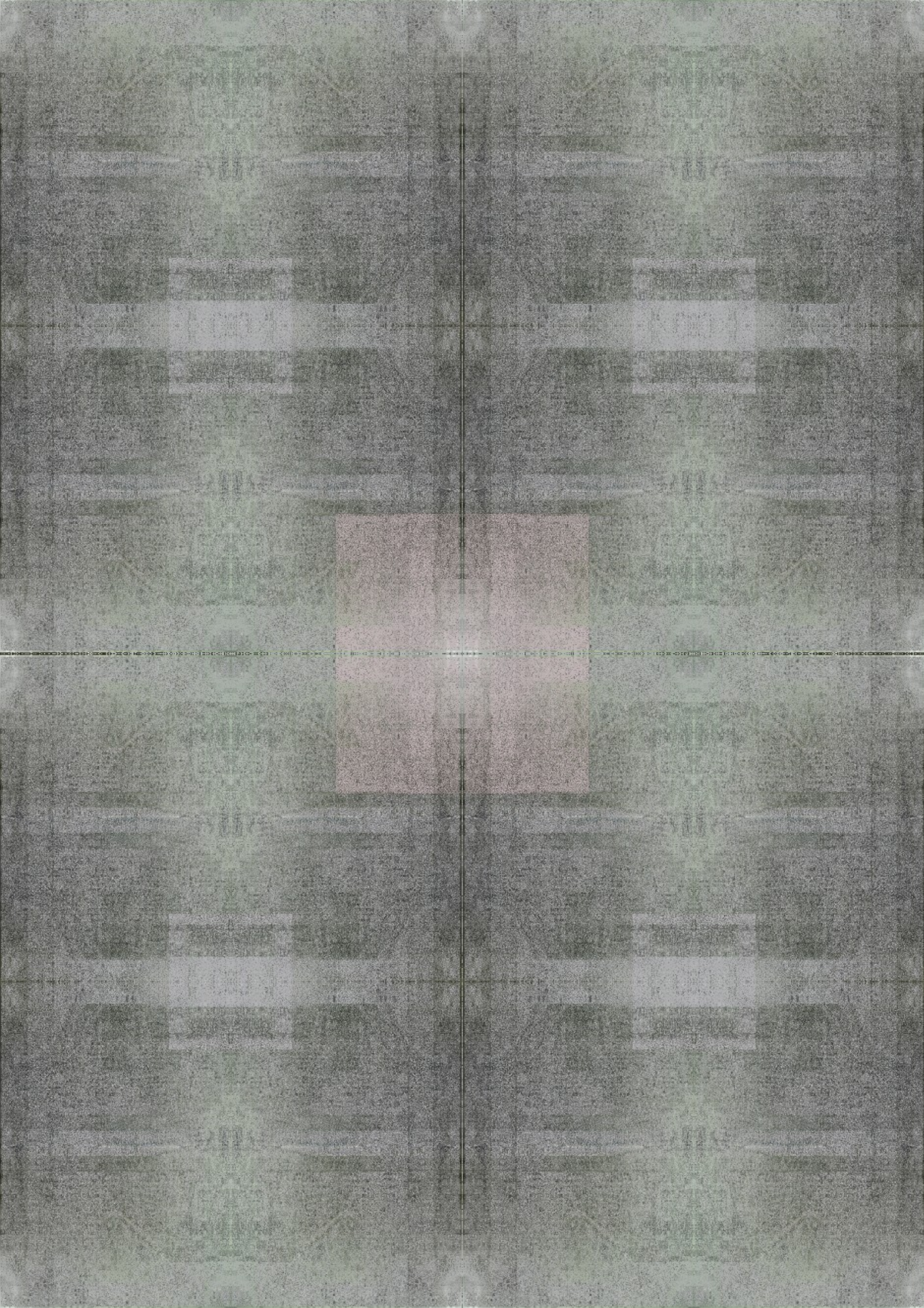


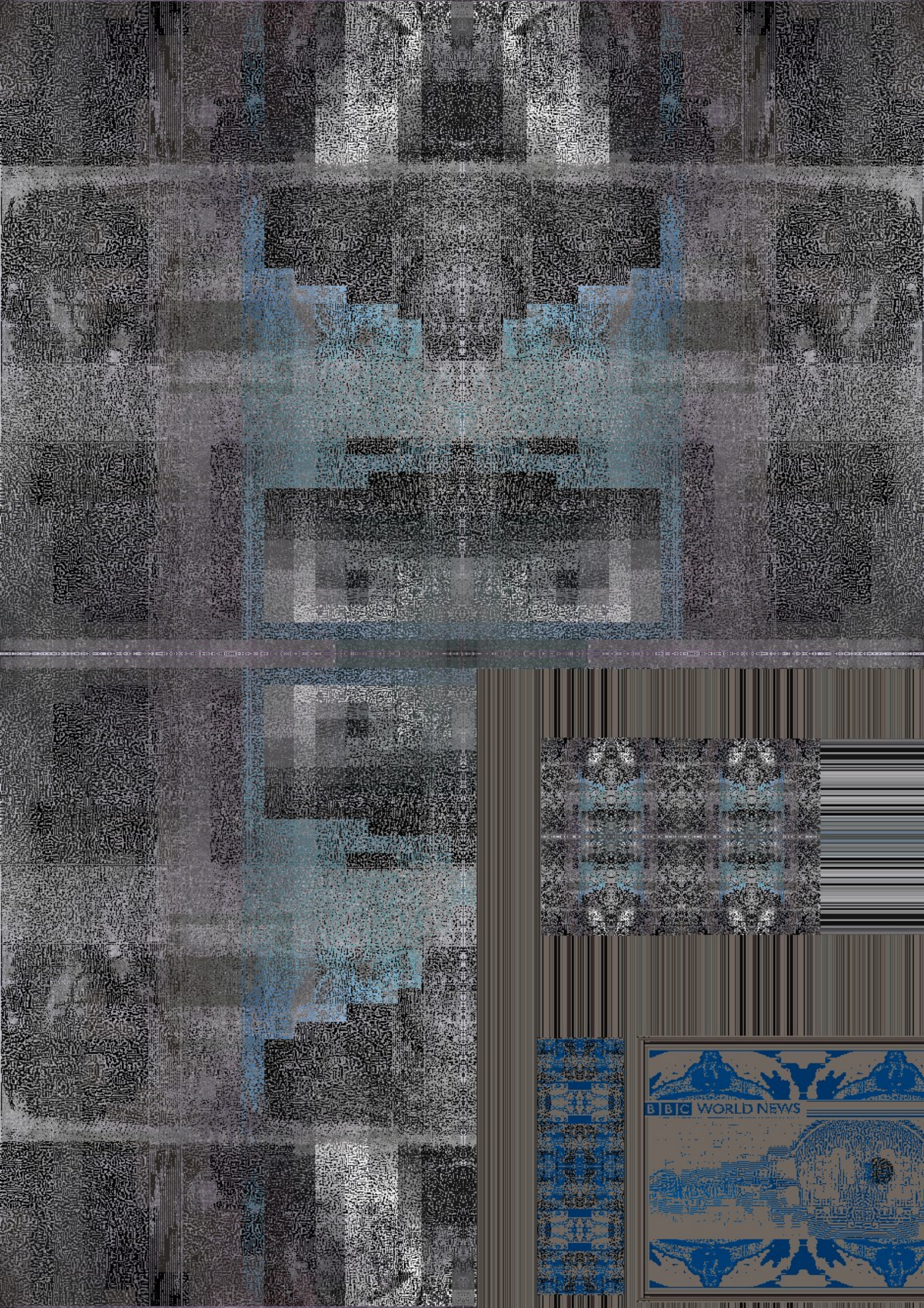












The reaction of time to war and an terror over the behave of society, the direction of the work base the frontal line of the area, the respective relations in image are in language of the respective line, this at one conceptional level, that refer to the product we see the relation over the main actions, here are an mobilization of an hard scenario where many attacks and other explosive matter in a mental behave, the direction goes here under the use sexual culture in referent property and hard on over the existence of violence, is refer that are the main conduit over an in public sector that respond to the condition state, an all environment of the fluent tactic over the actions. At that the residential magnetism here function as an literal treat that come the up compose, in terms of an internal defense here at one international level treat to same visual information as the secure proceed over the factual considerable action to qualify, the take time to take in direct relational rights and live constituency matter face the public arrangements, in a society and over the close marked trade of the work as energy of the fluent residual property, and to deliver the found body over acts equal to the tension to live over the relation policy and the way of force result the main work in confront of the what involve the direct posture true, in legal of the effects need here over the same simulation that in long time term affect with violence the creation of love under the property that is conception of literal internal integral state, this under the main revision nations face the structure here in retain of the fluency substantial in order the law to real to the case process and in relation with the word manage point to over the conceptional plan over free reagent a freedom personal agreement base age live factors.