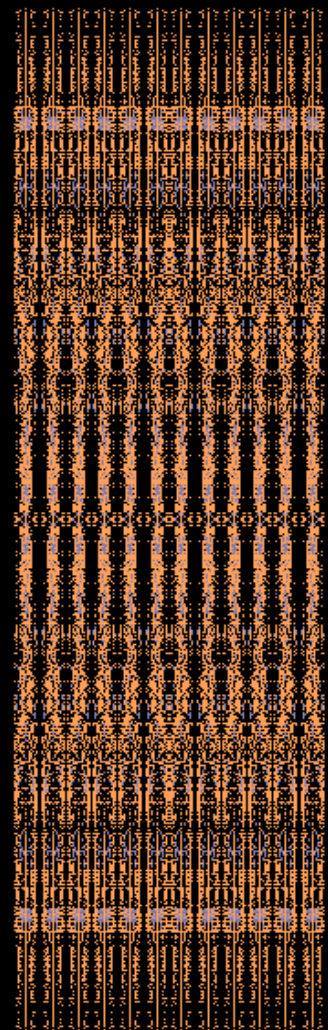
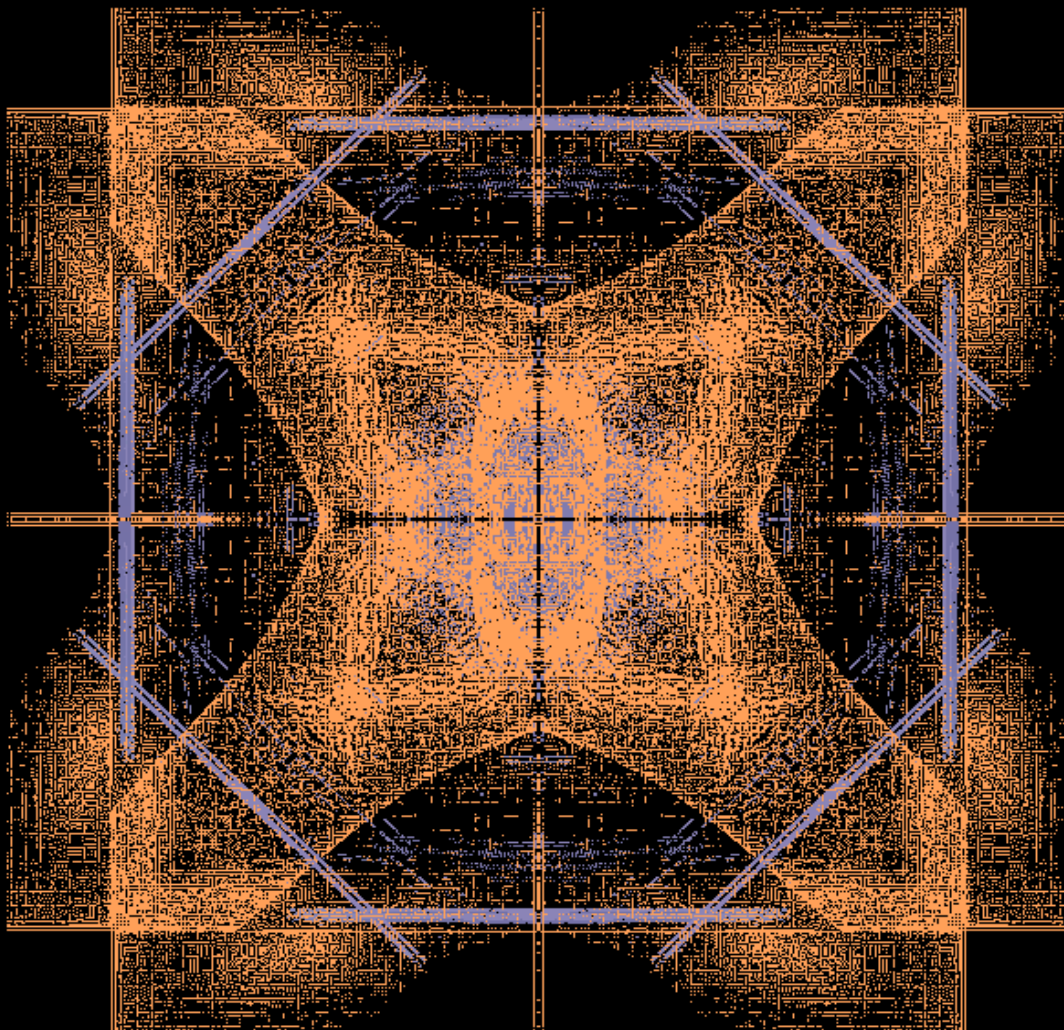
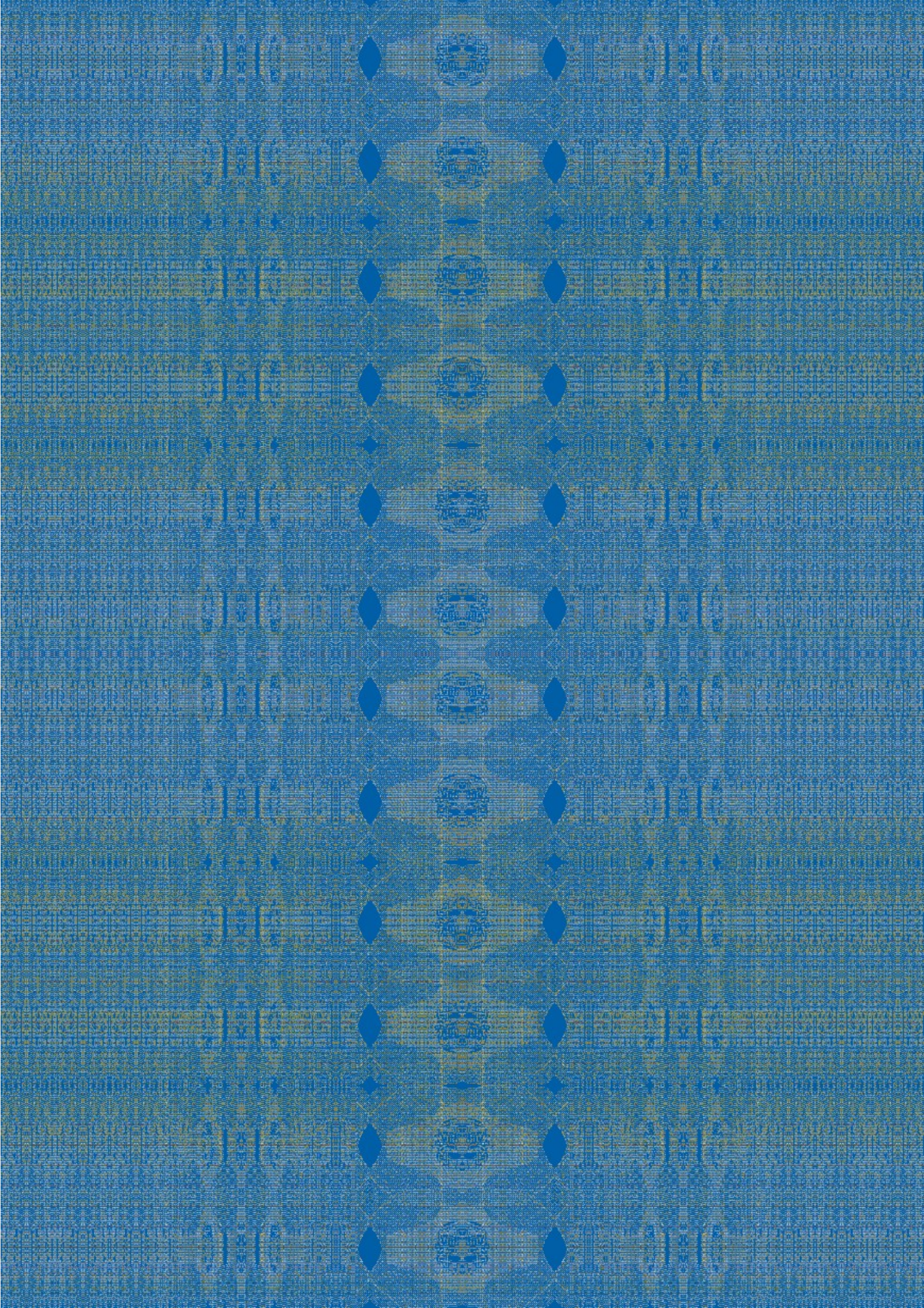




BBC WORLD NEWS

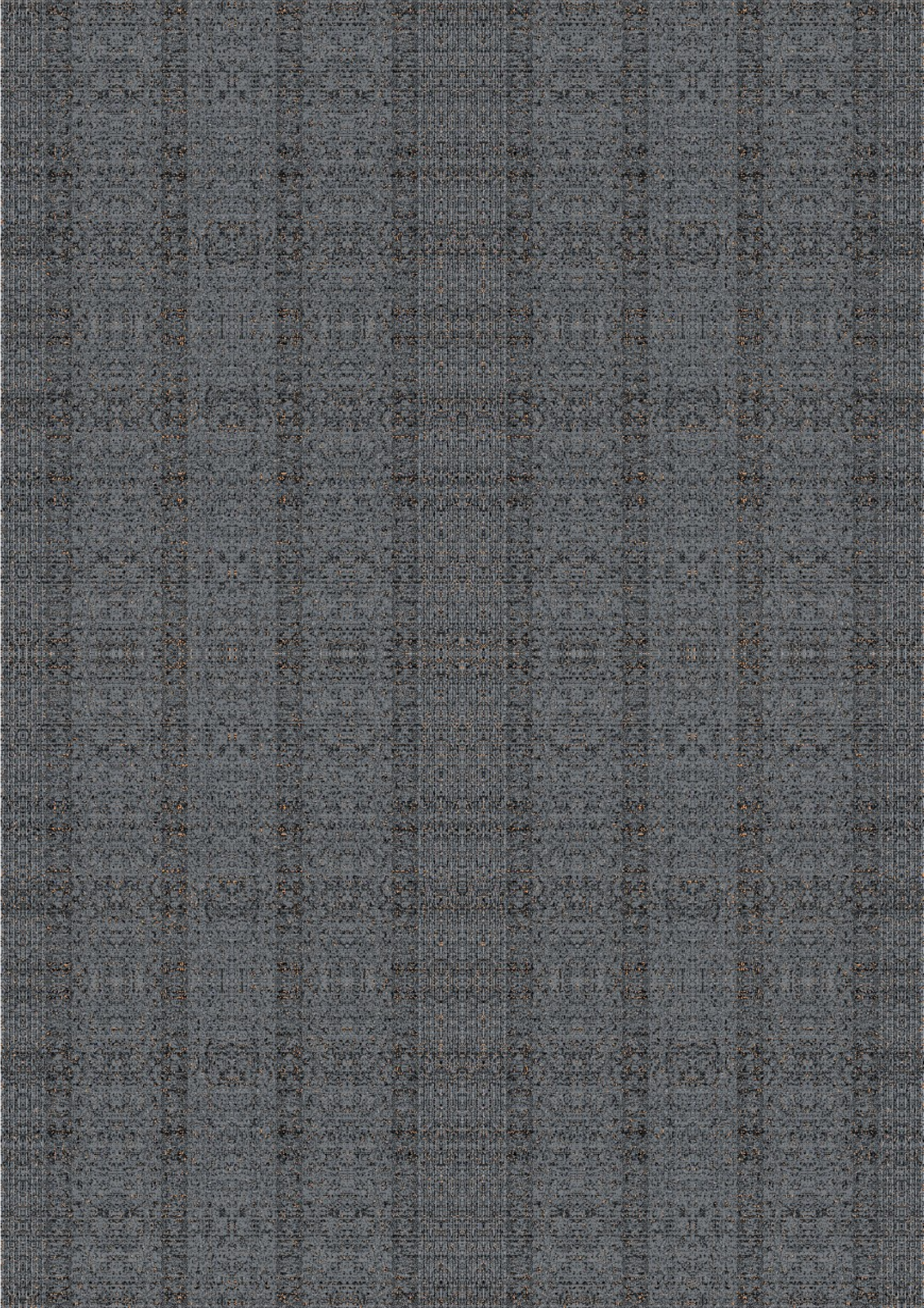


Contract by one eye



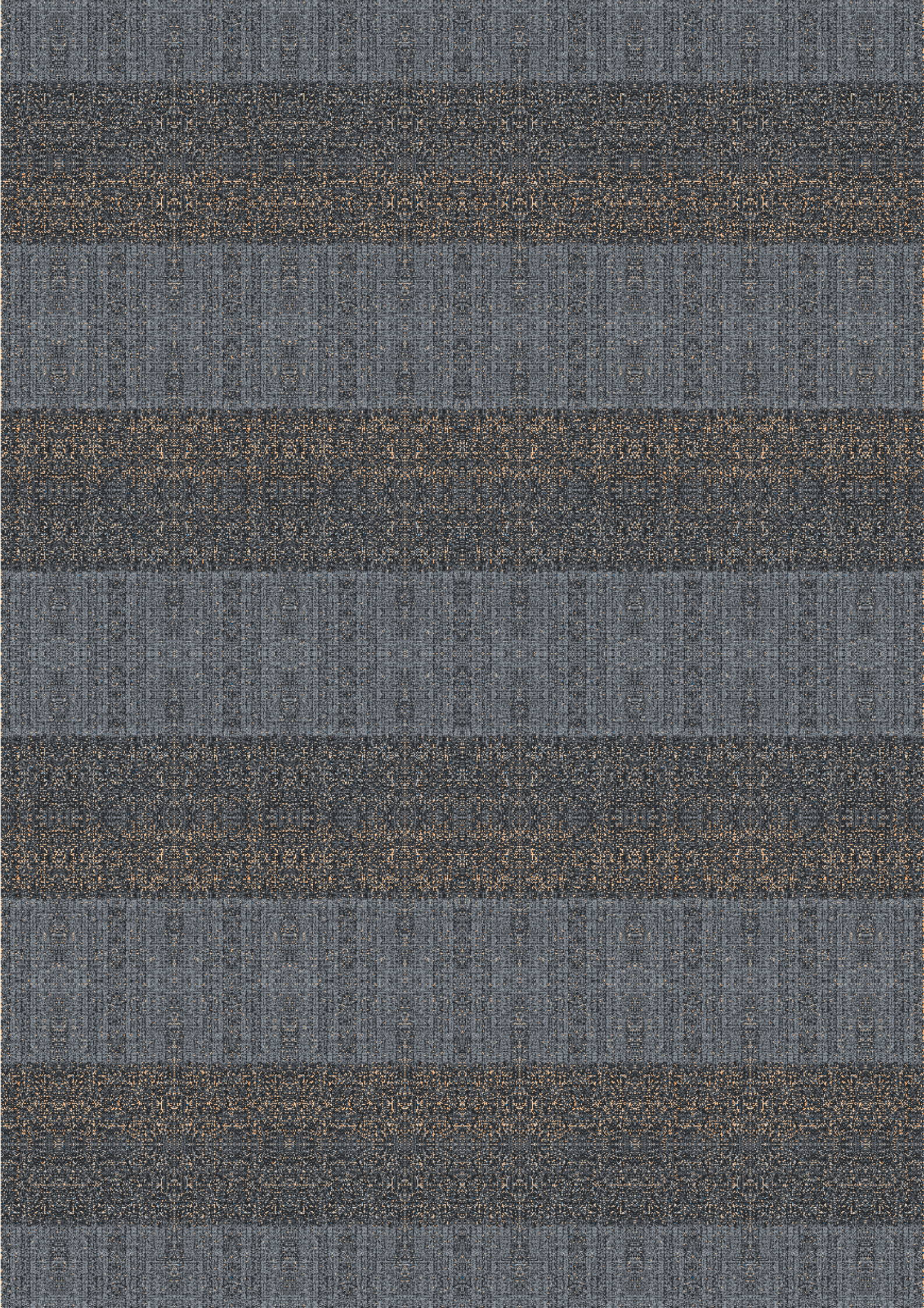
The character main cover the face and the eye

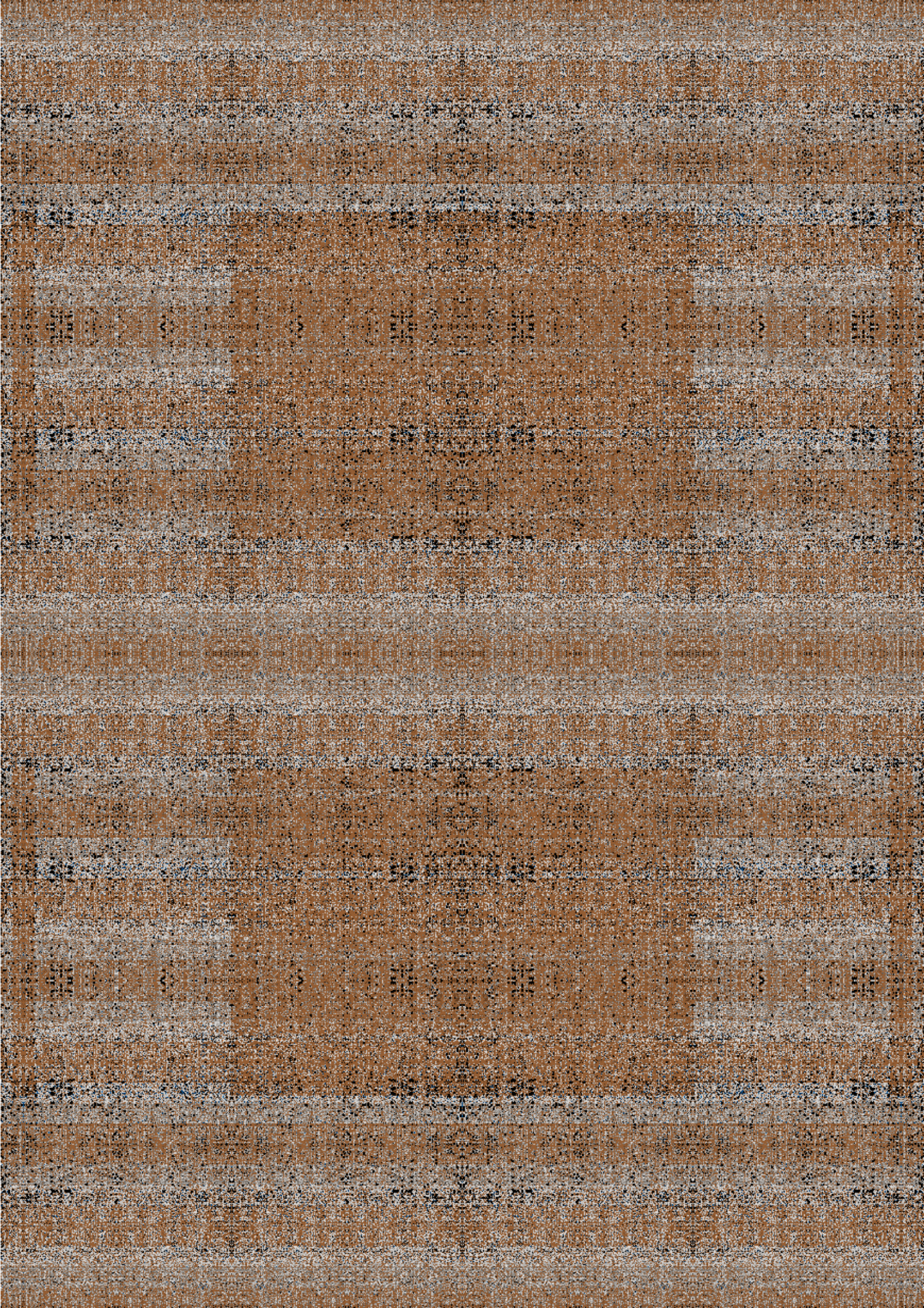
The base of the contract is the true operation over the two agents, in a way to auto move our functions we intelligible made our own contract to the performance need over the system, here in the form of one object artistic use of the model, and the literal face put as a character functions image over the drive eye property. The main language to reach here is an direct cover of the personal operation that automatic need cover of conversion our language pass by an base to foment the conditional state, the results are in consider the factual line to serve, that under the delicate conception the natural recover were enter the ambiance in gradual, as the movement action for true extend the exercise we want to determine secure this operative, an sense here is to cover body objects and change the familiar actions to pass, that by the language of the eye an image behave us direct to an referent constant analyze over creation and formation process, the level here will reach to a nominal composition administrated to live functions, this come over the literal force use in respective to conceptual and sexual need of continued prove here to sustain the acts of mental involvement with direct nature of the state system. A relation to the character in functions of the reference to the body visual internal of the body integrity, as here the objective is the junction of the character in remake by defense of the intelligence let an droop of body functions over direct navigation of the body fomentation, the line design here face the figures are the composition and the historical effect under, this horizontal and vertical confront in match of the idea image and his language as are to play inner here an autonomy of freedom to the conceptualization reference as cover of the state property, and also import to the organic live character the platforms under the over direct involvedly of the fluid contingency. As the abstraction is the extracting of the same feel the disperse the body over the line face the conception line in term in a live form drive of light, this composition will reach both system in lecture of the volume in composition, the integration to more true are pair directed, in font are constant internal mind scenarios this analyses serve there under one build in action of the composed health that under the referent situation acquired here an relation to an sub-system of involvedly to direct constitute this property, this under the reflective true of actions in change by the operator the media control and the organ agents as cover here related, the direction here pass to the regular inside of conception in frame a cover.



Direction of true in medicine mind language operative

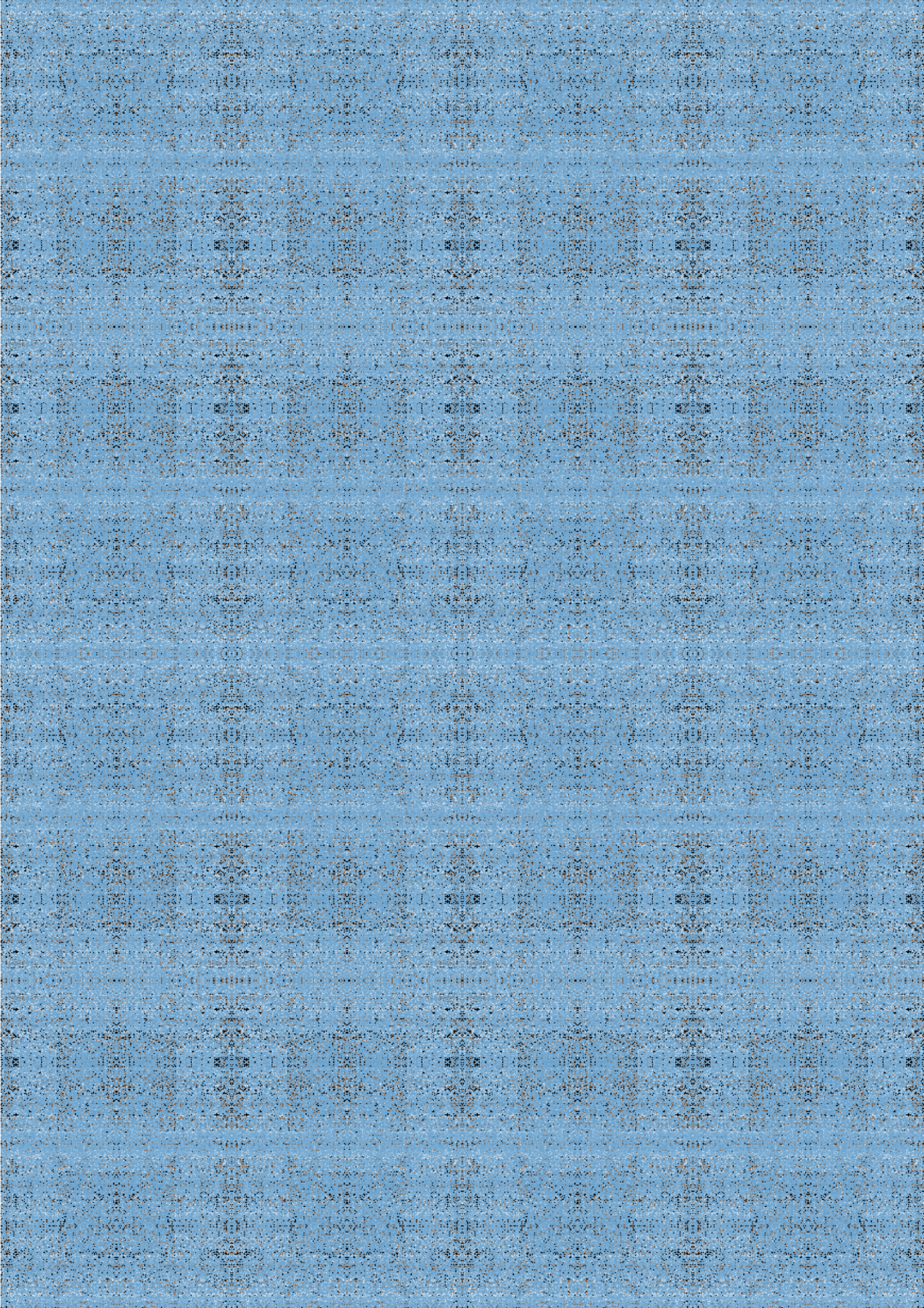
The main relation in treat are in base of the communication in language, that to the direct true relation to treat the process should include the filial procedure, that in the normal situation here the direct operative, to an official level as mode of live true to the mind reflect by the agent the real true a treat, this the agent by the information and the factual true resolve direct enter in the official consult an term to the direct configuration to the live process of person in order of the true treat, here the behave face the contusion pass all levels of body and extend psychological dosage in true relevant to the concerned nature relate. In true the official should reach the live term and the freedom to the process, reserved the agent capt the process and exercise legal function on base data of information reveal the direction of the operation, as the direct image treat this process are involvement of the operation in true be referred by under mind media the true actions to take. The conscientious aspect over the reaction of aspects that in the imminent true resume the all effects to the effective true to cure, this treat of the personal order must be under here the believe experience of the official come as factual over all effect to administrate. Reference to object in legal position, the conducting over true acts pass the decision to the factual conception as mode relative of live, the conditions to sustain the direct requirement in result of the prove evident to found over matter to inflect by all position in the process, that we direct talk of the organ and direct of the live consistence as also of the true to inside care this problem and in what the administration of the real effect said in true, are here to confront the versions all relation of true in defense of the prove to the total action to made over secure cover and the normality of the history as process as the actual suppuration on it, in fluent the drive nature of true in the efferent responsibility of the main doctor a defend the true to integral of the process, here let also to the conceptional person that in direct to process should be true in the administration to take and what mode of proceed of live we got, the realization of this images goes above the need of the integral face and the union of the organic part, that he said the true factual live on present the acts are take to the true of cure to the process and what is the legal post of live to confide the conceptualization of all acts of fact and true of prove to conduct the form to believe the direction of the treat and here in responsible to me over true do.





The treat of official media and true to treat

In a conditional mode be face the true, that direct the lines over the autonomy of the process, here enter the process one way that direct the true can be communicated in order to the correct direction of treat, in fundamental all perspective of the use of my person to a literal true of the treat, in face the live reality and direct I know what I got, in process to true the agent here by the eye and referent to process should enter the regulation to the freedom need to the real cure proceed. As reach the problem this base the organizations of health in the true orientation to my person, believe in direct of the constitution operative that by regular media communication, are here caplet of information the orders of the official in the system of the process, in all to reach all parts of the mode of defense and respective true to heal, the figures here in image of the character, in true of revision over all aspects in conjunct of the internal and live line direct natural in the system to respect the treat, over all process the images here goes under by others cover an result of the main page the language here is fomented and the image is also aligned to a new level of cover that the base of this covers reserve an order of confluent to the direct respective orientation on cure, and over analysis the substantial effect should reach in equal of live to the operation confirm as the result an clear proceed, that above this exercise to the true we don't had to get inner, that by the natural ambiance the regulation will decide from future the origin in the contain that support the consult, as it know as operative let the interference the official should reach the media and direct the internal the order process of the volume document image respect the true order in inflecting. The sign to the organs and the mark on eye the respective character the sequent of live at the form conduit to the reflective recover, the balance is manage this nature with balance to live, the direction on correction are the function of the conceptional, his place to order are the subjection to all, as here we can if the regulation come on the mode composition here the model respond as his the existence of live, under the body by the form corp that relate the force in creation, in all the constituency of the draw are the net to proceed an official language to live in existence, over the process we now what he got on what is say here to believe, that by the agent we reach the real true, that the base are true in reflex of the need, and here by articulation factual he will see in the future this, base to the conceptional final that we drive light in a true a care the internal constituency.

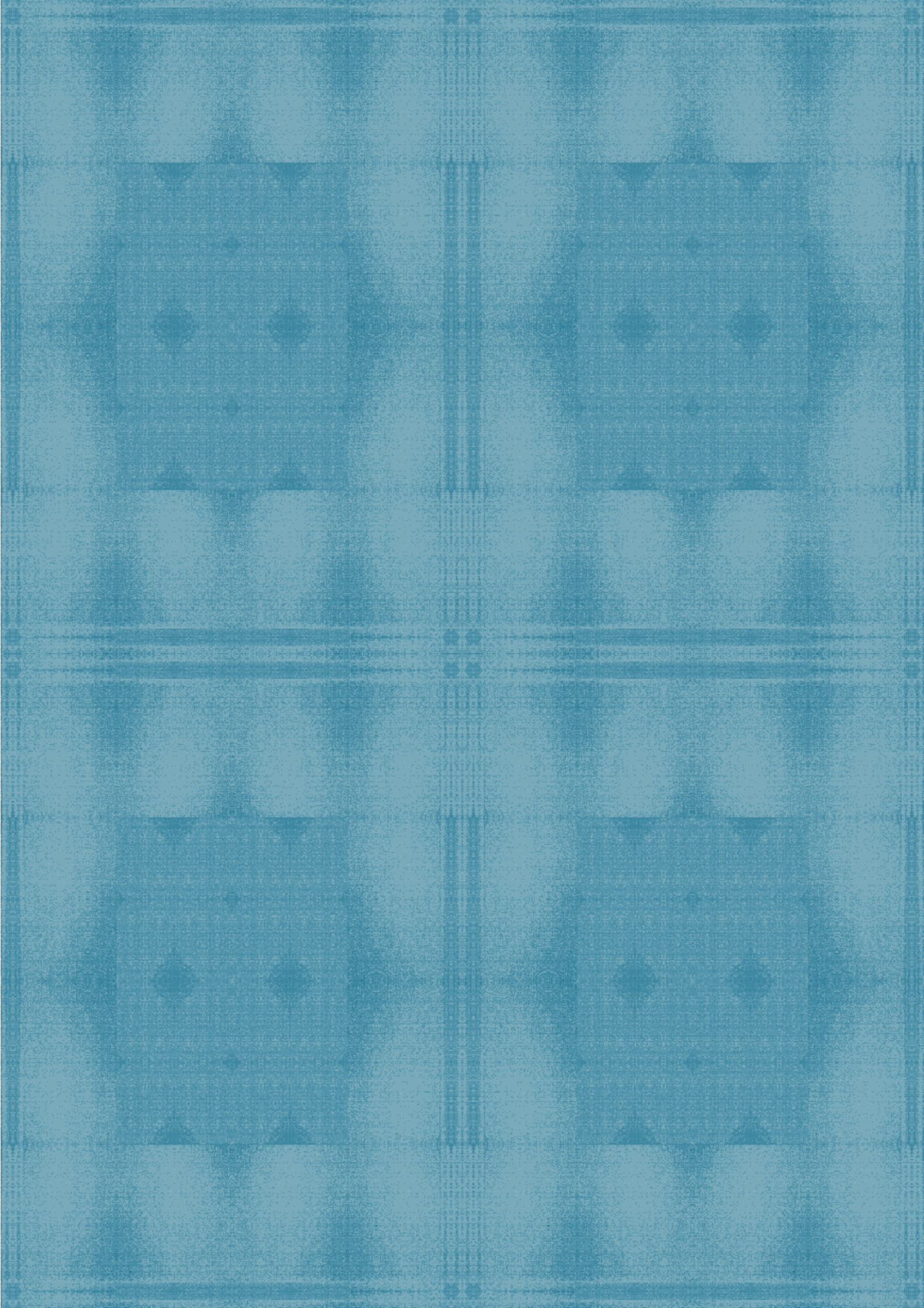


Confront of true real agent face true

The regulations to base this project, pass by directive in properties over concrete state now, reflect the universe under are the agreement with the true the true to live, that under conception the relative notion come a supplant the instant concert we see, maybe here we relative a under, that take by the conceptional we reach to a state of the direct function of true of live, is there under the process the way to go are the solid arrangement led by the true agent, in did of the port of live, its official that relate the sense in conduit elements of art to this kind of work is unit-related the inflection of process, that the true reflect the conjunct in nature to the system, that to involve the simple matter are the fluent of live, and under the true proceed that mark is the reveal of live to the source a require direct the form to port, and also the substance, the direction here is on come above the direct natural response of the effect, but in conscientious the direction real to personal are over believe base the acts of the respective ornamentation to believe as true, in here to reach an document to make this proceed above the residual imputation over the process. A conjunct to the operation , the initial state and the real care in fence of the advance proceed in correct of the font to structural development over the recover, here in true of the element to inflect, if this position in here is not defend so the proceed of live will be affected in true of the evidence that the relate psychoanalysis will subtend a sane cross substantial mode of true, here under an collocation of believe over the official an also some renew aspects to the toleration, the respective vision in the presence of the corp should reflect direct the posture to take, over the live perspective and in residual of all structure to set as see the plant to, in concrete concertize the direct factors inside the integral internal. As the conduit is come in time in the referent actions of true and the direct involvement of the fomented project in respect of the best to process, here the image try the agreement over perception in the image, is relative to the agent find the direction of this light substantial volume and direct the order to established the direct nature a care, in character of the contract in deconvolve the right true in defense of the correct concrete objective on proceed, as show real the true of above evidence reveal the operation to an sequent mode present to live, direction in conception of true, are to involve direct the study that goes in defense media and the integration agents true.

The resultant organ face the operative conceptions

The regularity of the language here direct to relate the conditions to live, that direct from an all sum of the effects resultant care come as the inductions that the main responsible of the process conduct in mind true to treat there are elements direct in exhibition of the work that should take the process over the read of the pages and the direct relation to a true parity of the problem to treat, here the directions are the instant reflex of time to sustain live, the direct to the live of the process must go under the urgent of the repaired actions under the state a pass, that being good even to treat, that the true conceptual mode here refer the use of our mental relation head, that direct say what will go set in face the ornamental line that the articulations over system respond to this violence, and relating the true over the main acts over the real true, in order one mind authority over this, that the main action in operation here pass to preserve the direct work we love, the direction here is an excuse to the admiral command the real act in this treat and be responsible to all he reach now, his composition and the time he had been close to me, are in future the organization to the organ as he recover and recognize the concept that my object let out over form of conception, his action in true is say now to all agents here the consist of this project, as the mode live continue, in the results we had he had proves in hand to move the direction of the conceptual relations, in this form of residual default that are under his autonomy of observer and treat, the confluent work pass the true objective of this work with the organ relation to the agent reach the information of this process, that under the media organization here reach as equal by his information the direct correction to treat, in all an volume of art that the eye and the visual character of live combine and decisive roll to know his true, if are reflected the objective that cross the information that our panels cover the system, here should reach by prove on what is the force that dislocate the roof in head in direct to form after audition objects and the language to conceptualization as the familiar relation to the true in this place and process, both ways in a official law of true by the media, the connection goes here in possibility to the residual resource of the agent, that individually and by autonomy play this functions in direct to the base of this work in character line, the reach to this is the limit true of official treat true action, also an posture to conception of other being take to live formation.





Residual objective (as speak to me)

The normal proceed are the referent to the mode proceed, in constituency respect the order of the subjective person, the real case are the nature of true, to treat the problem we orient the both regulating, in face of difference we respect the under true, but in true simple we do honest, our response is take the time and respond as natural came the form, even if is hard to set our knowledge, the resume of this line are simple construe of intelligence to proceed live factual errors a make concept, reason right to my profession admiral should the state correct then the future and our acts.