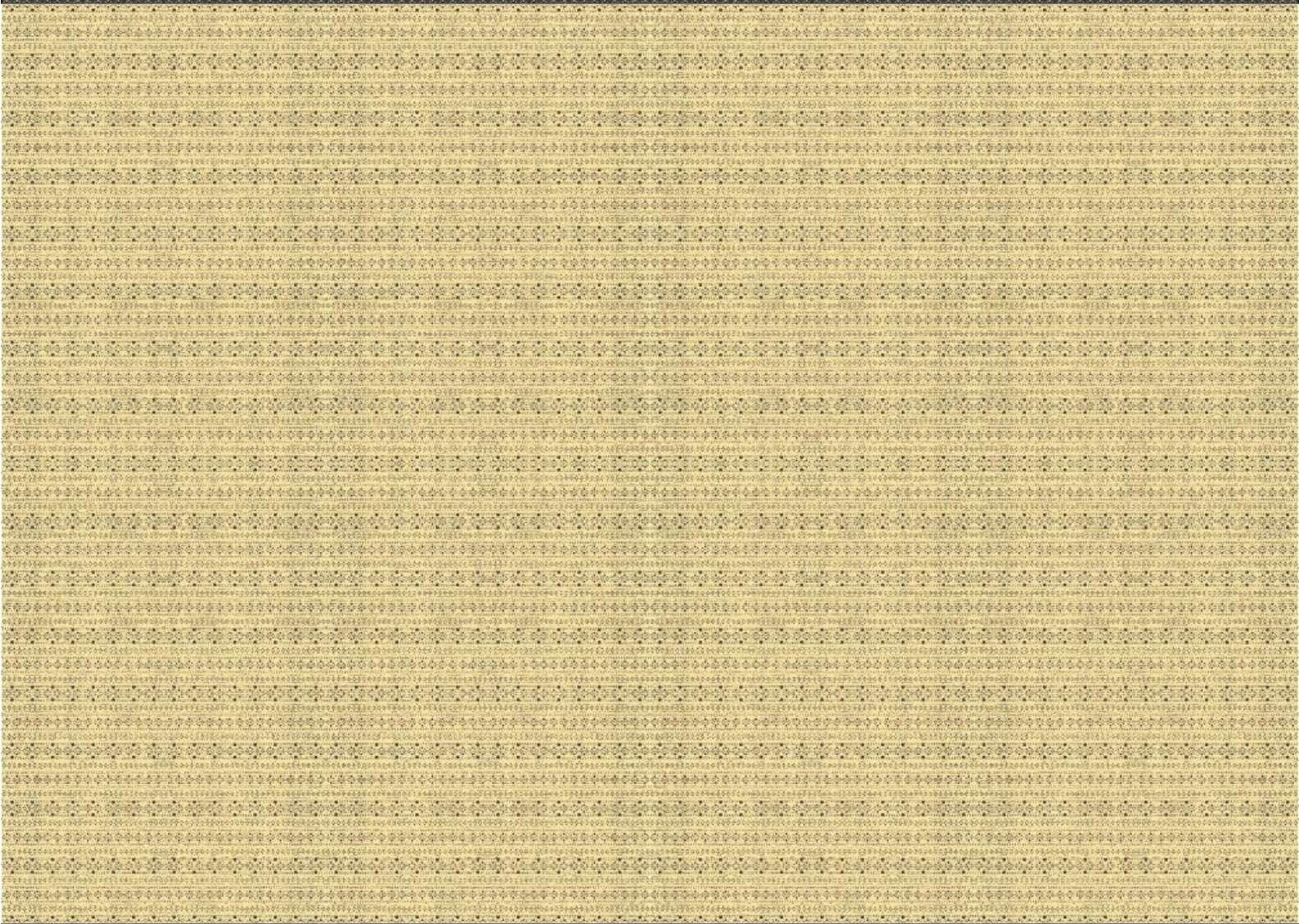
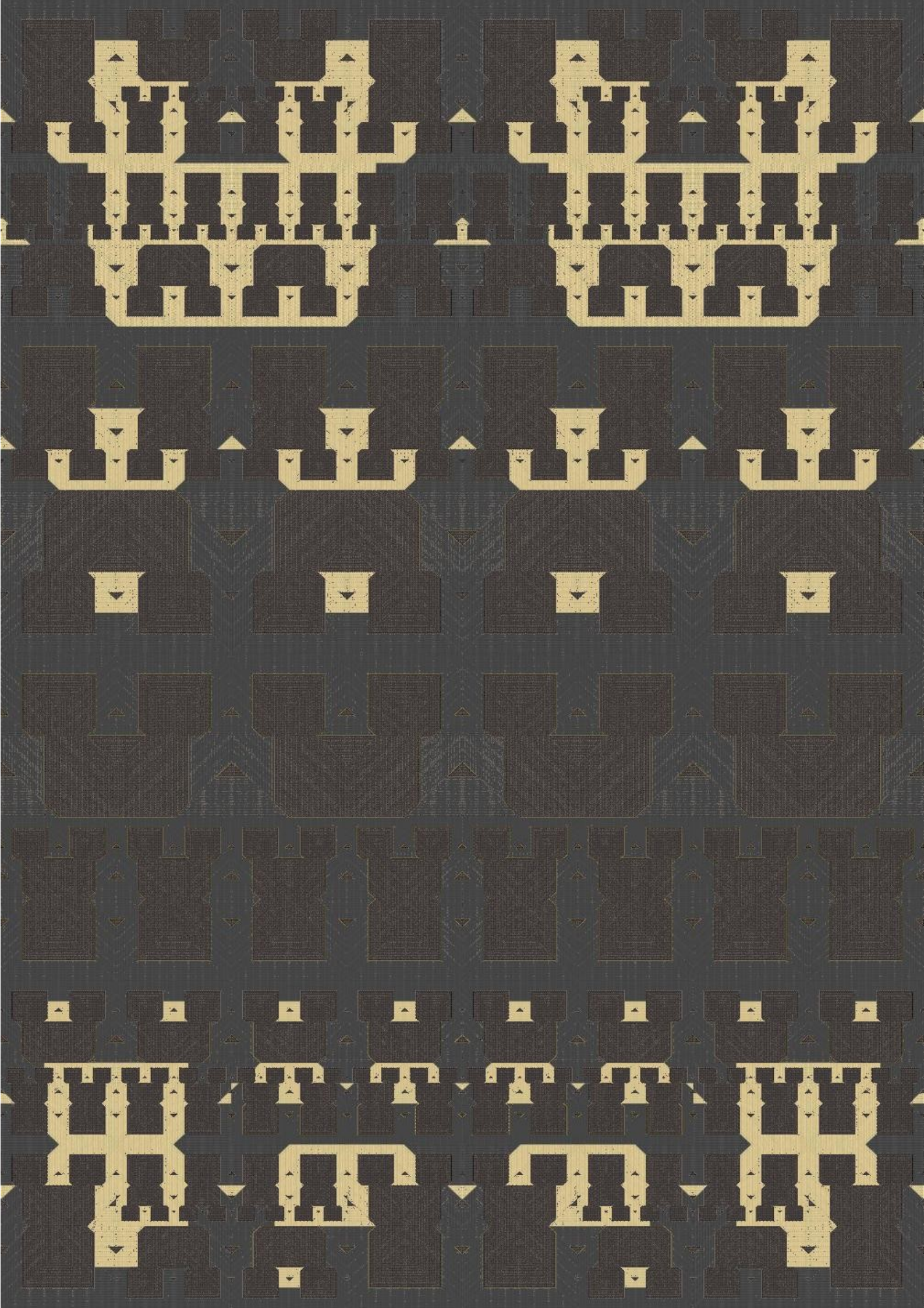
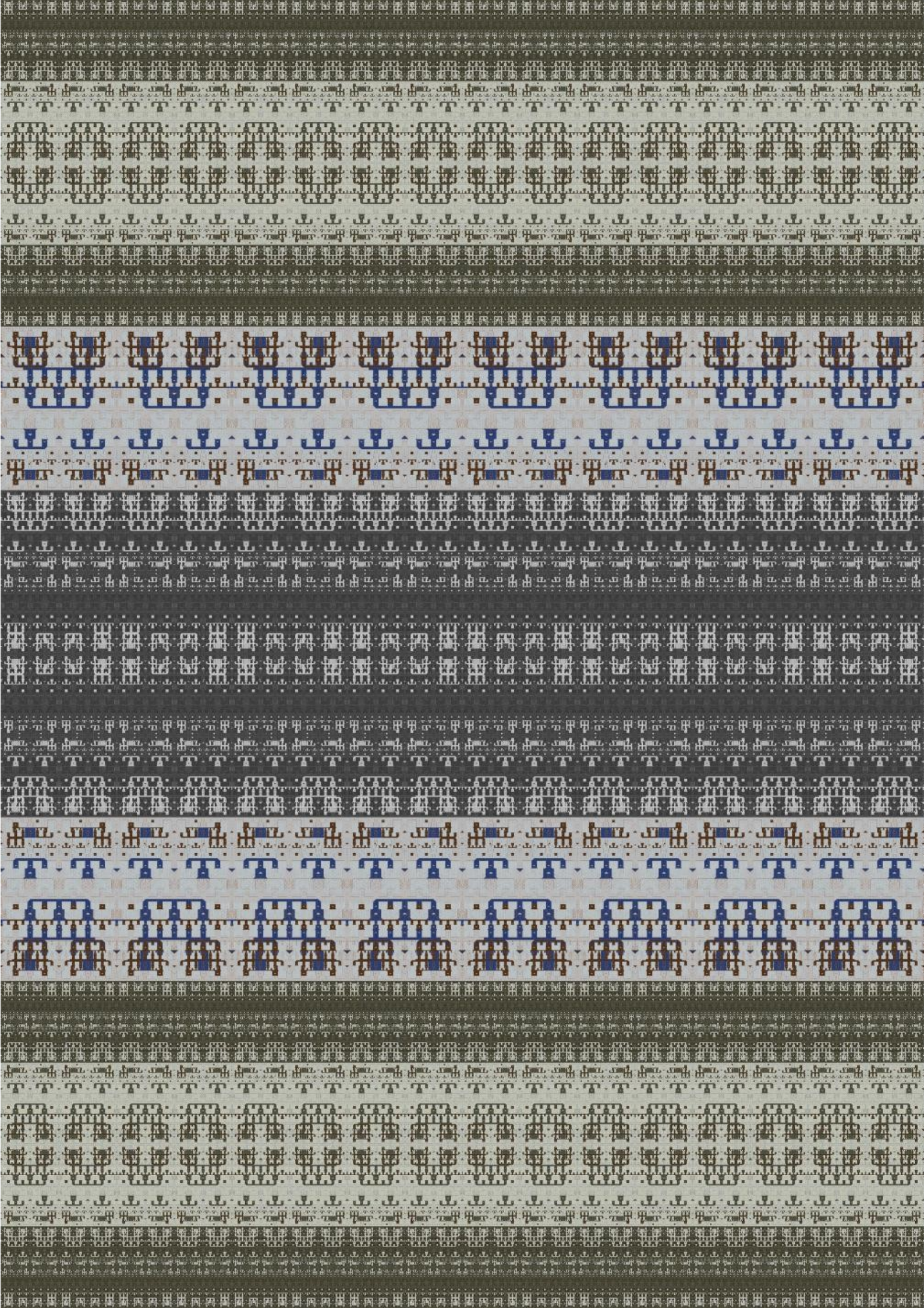


LIGHT

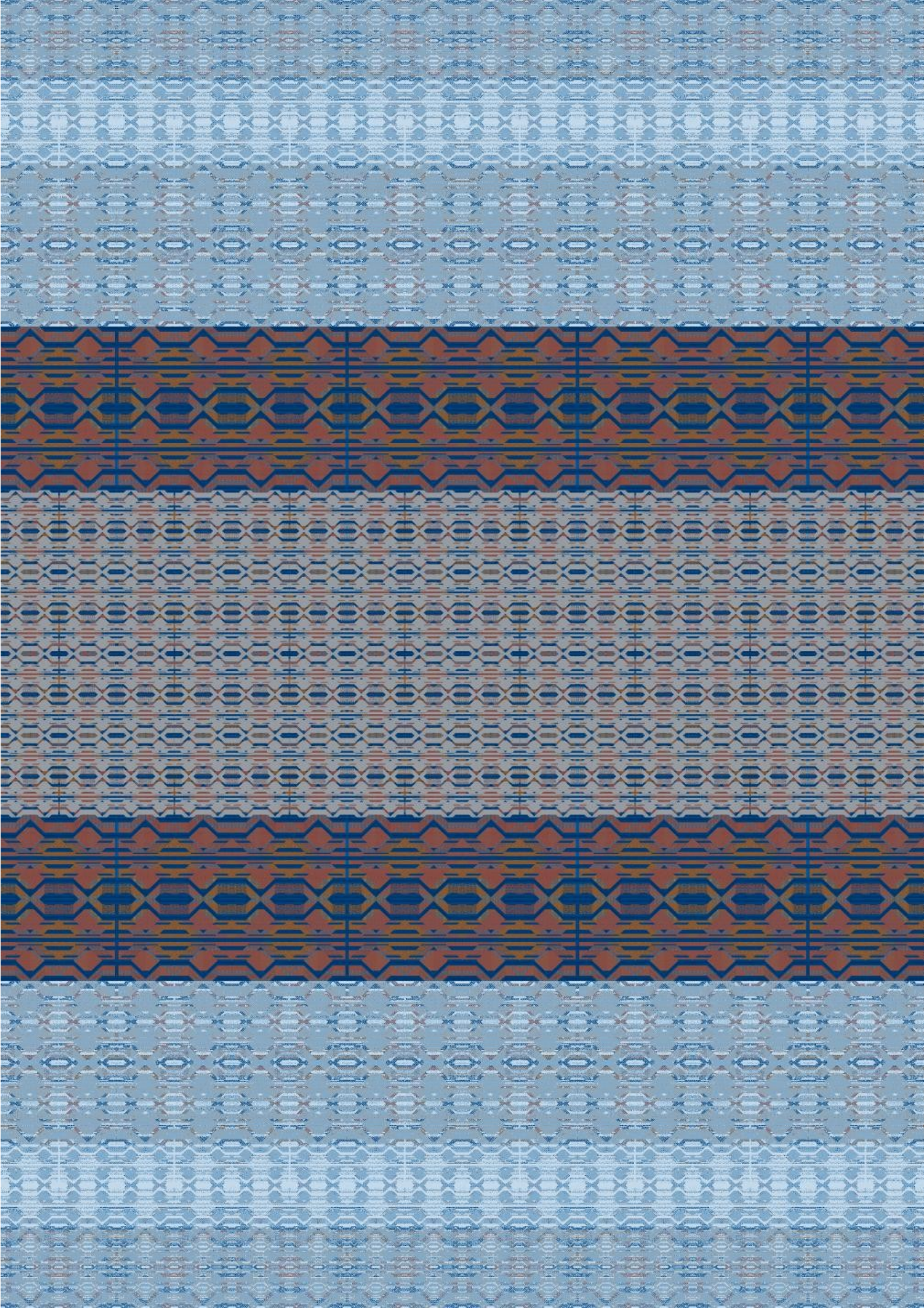


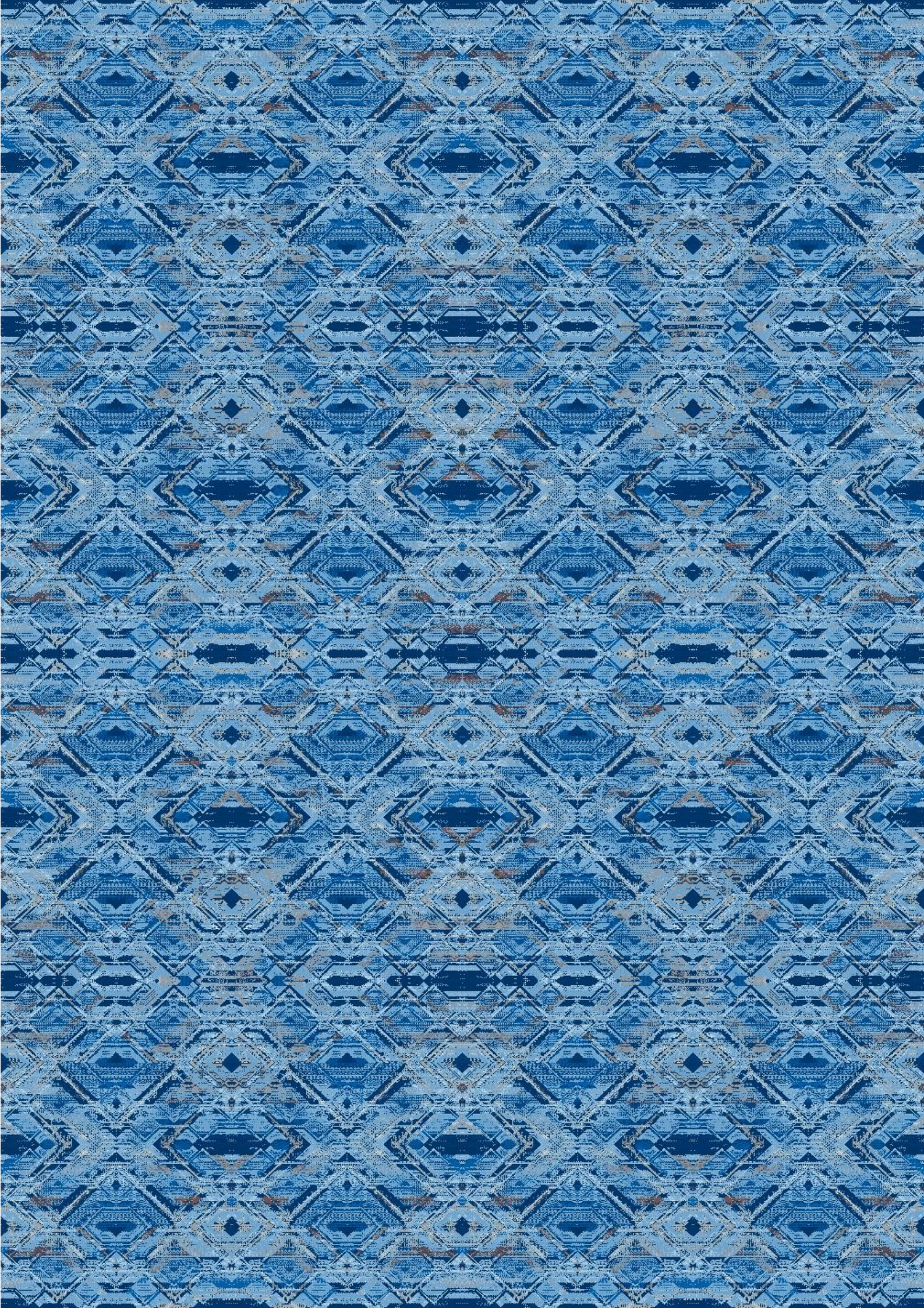


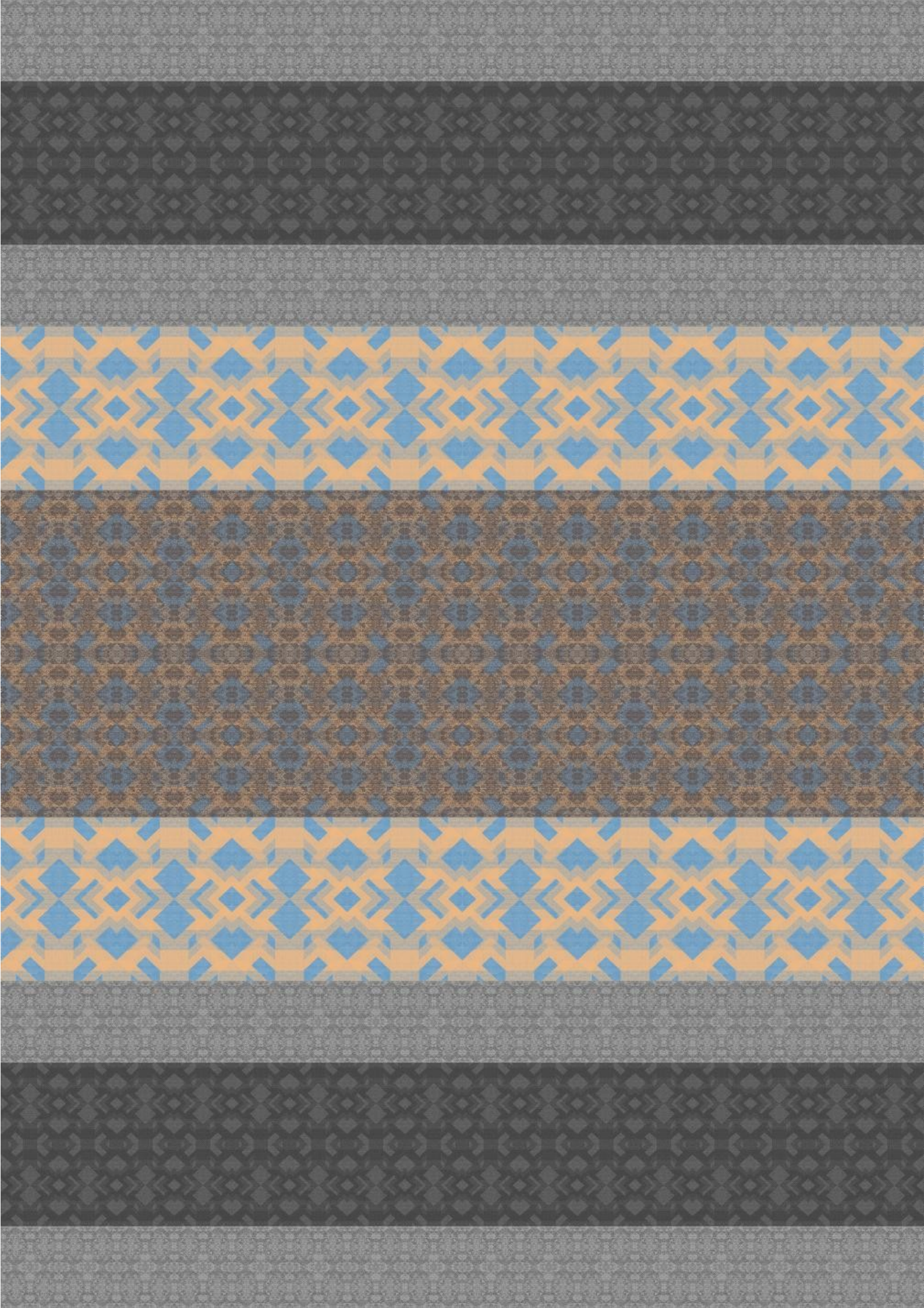




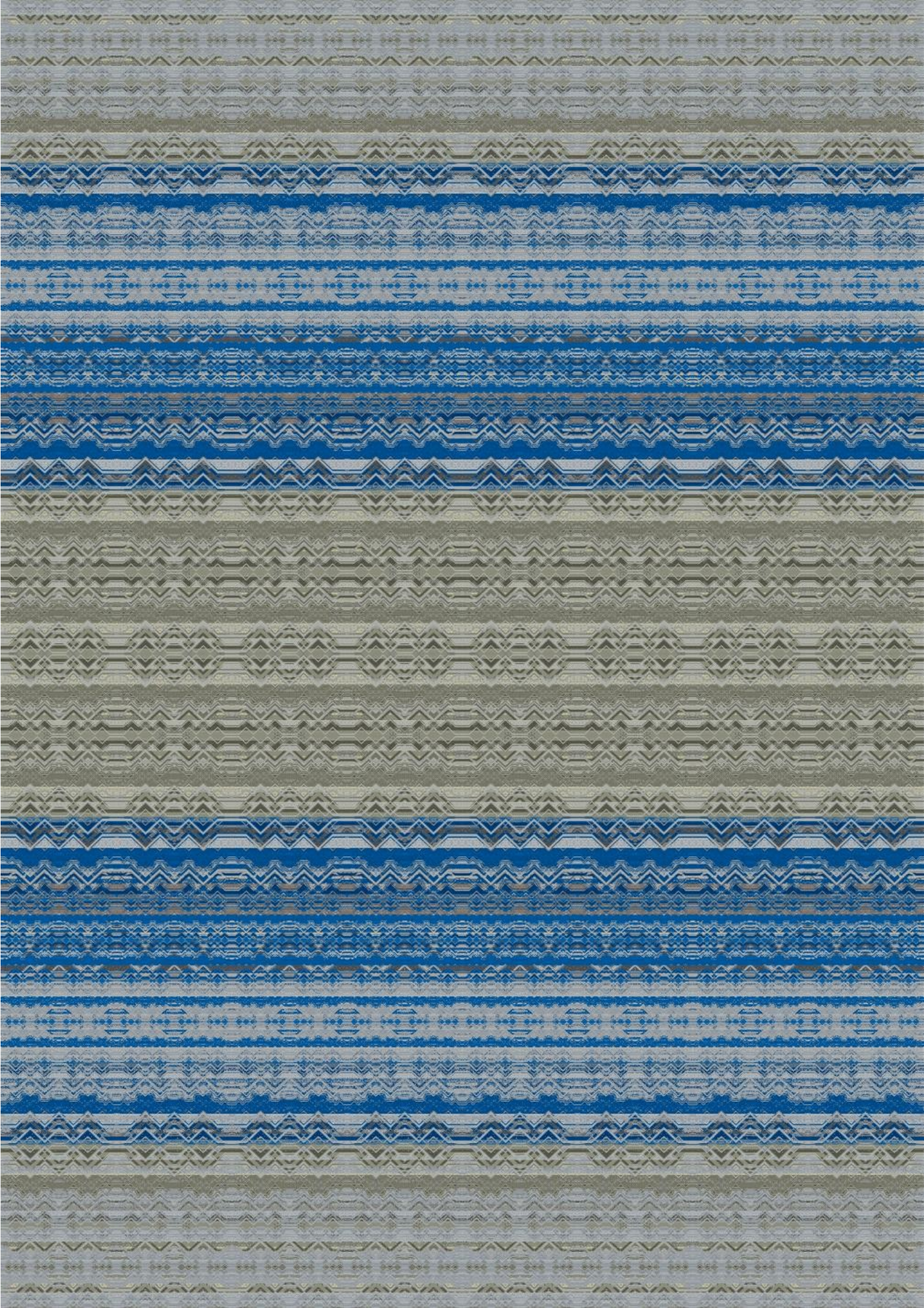


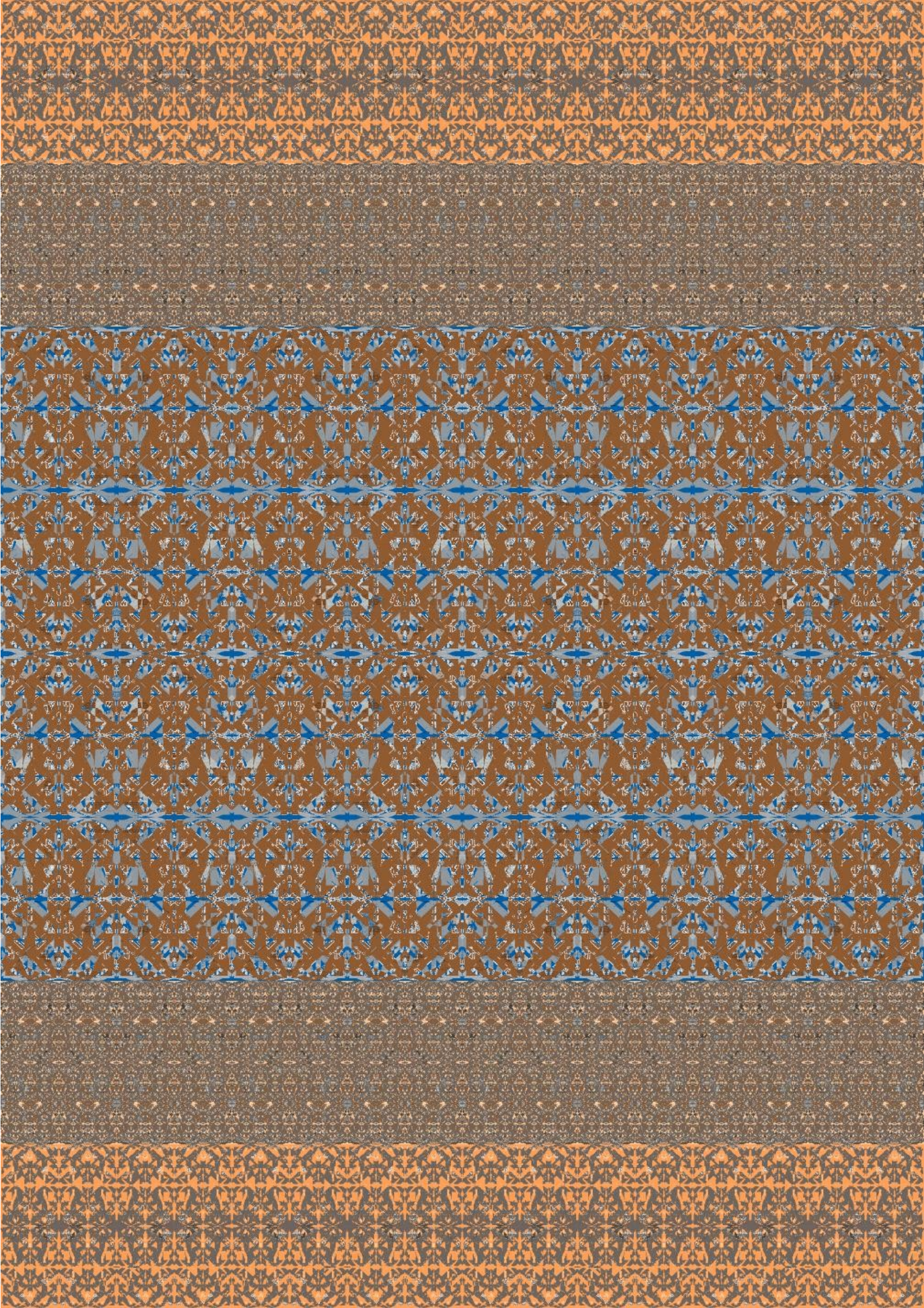


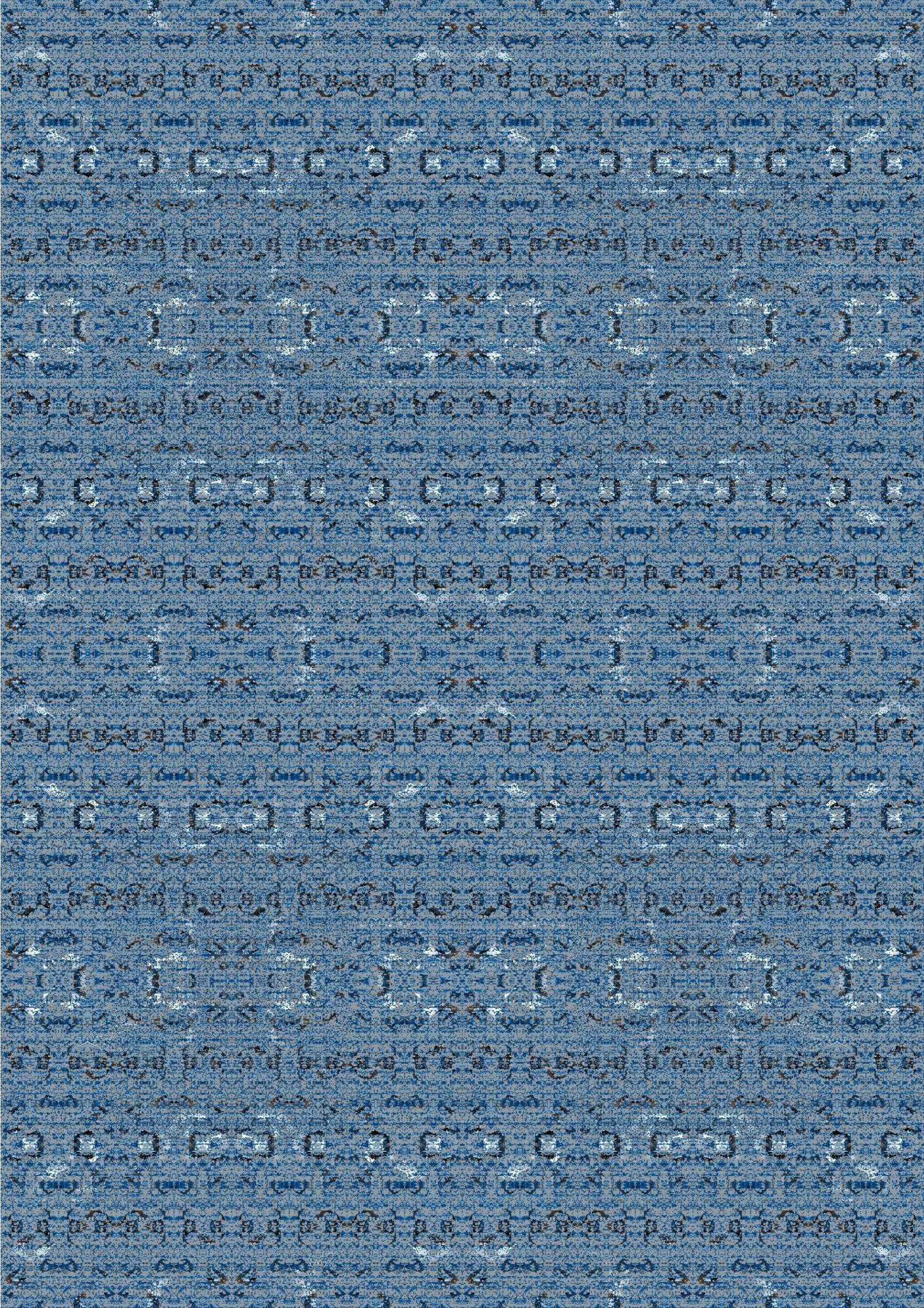




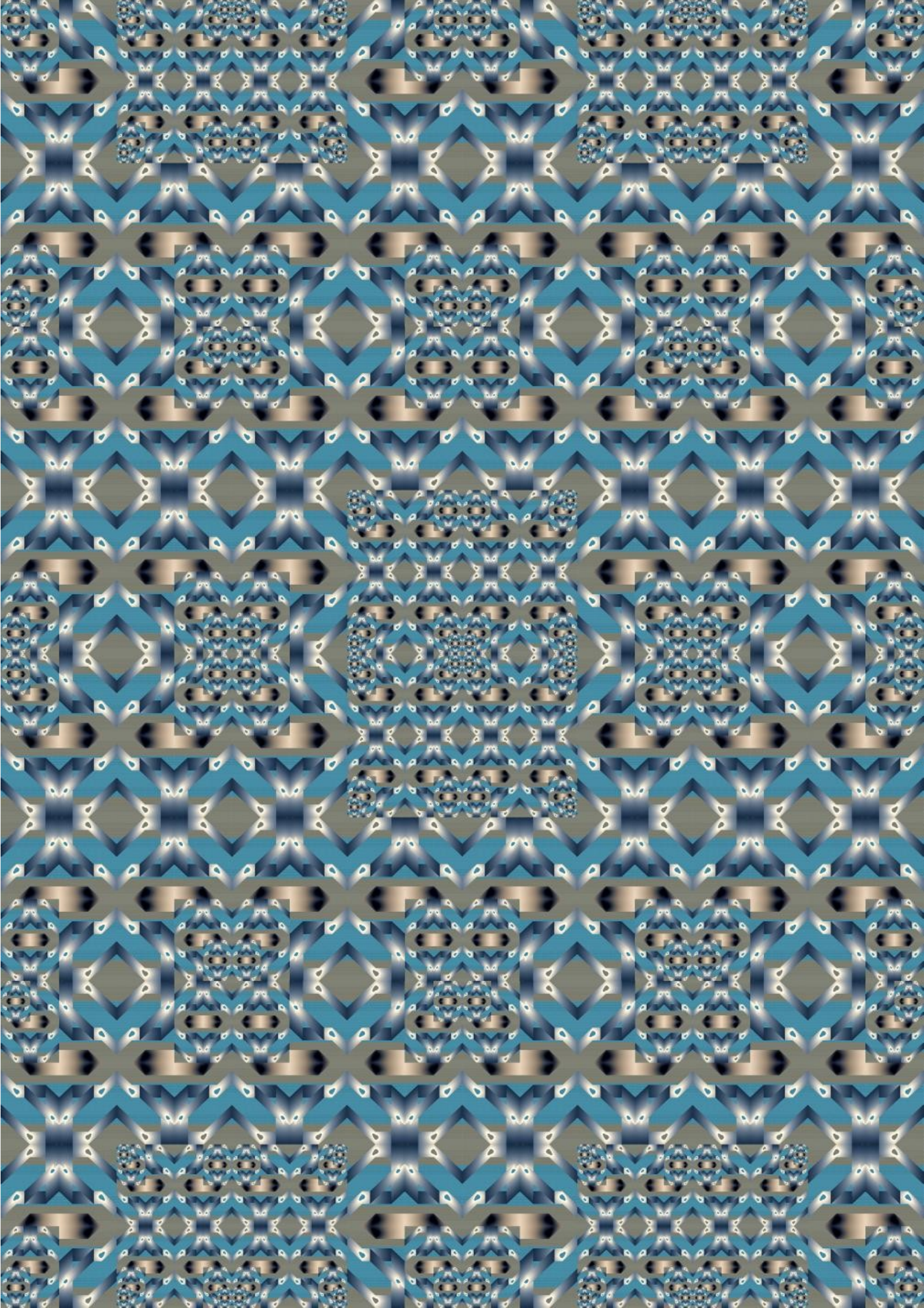


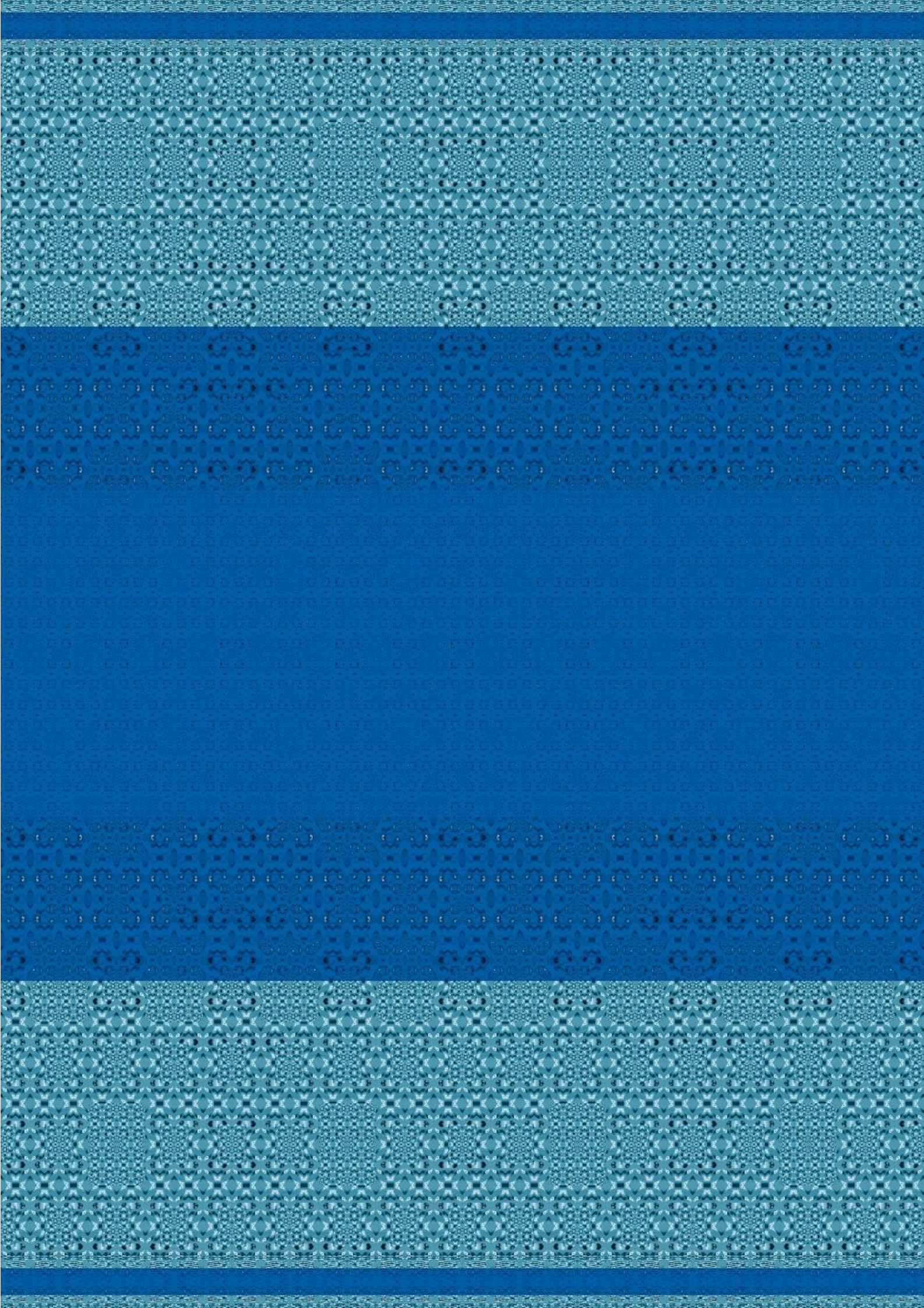


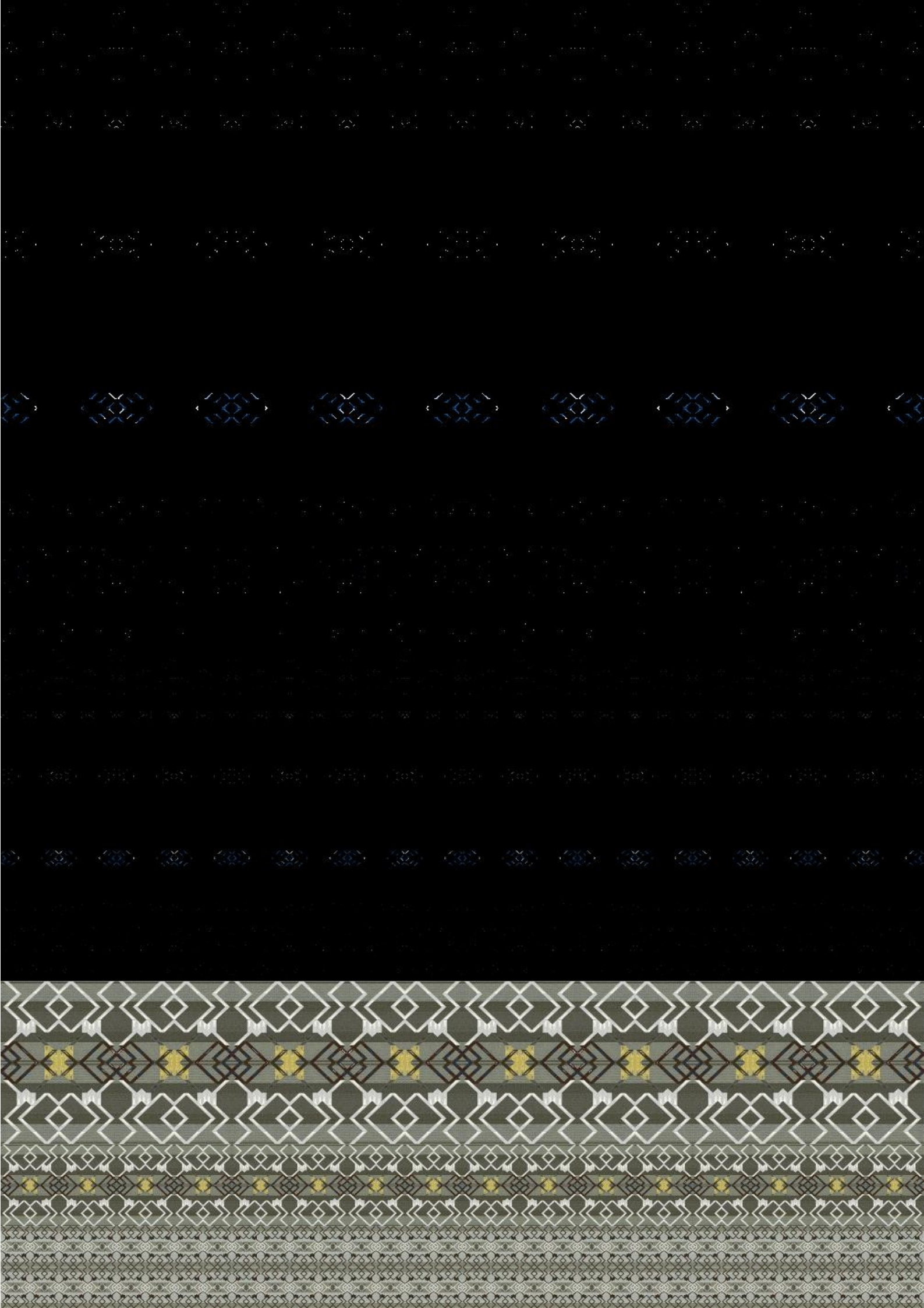


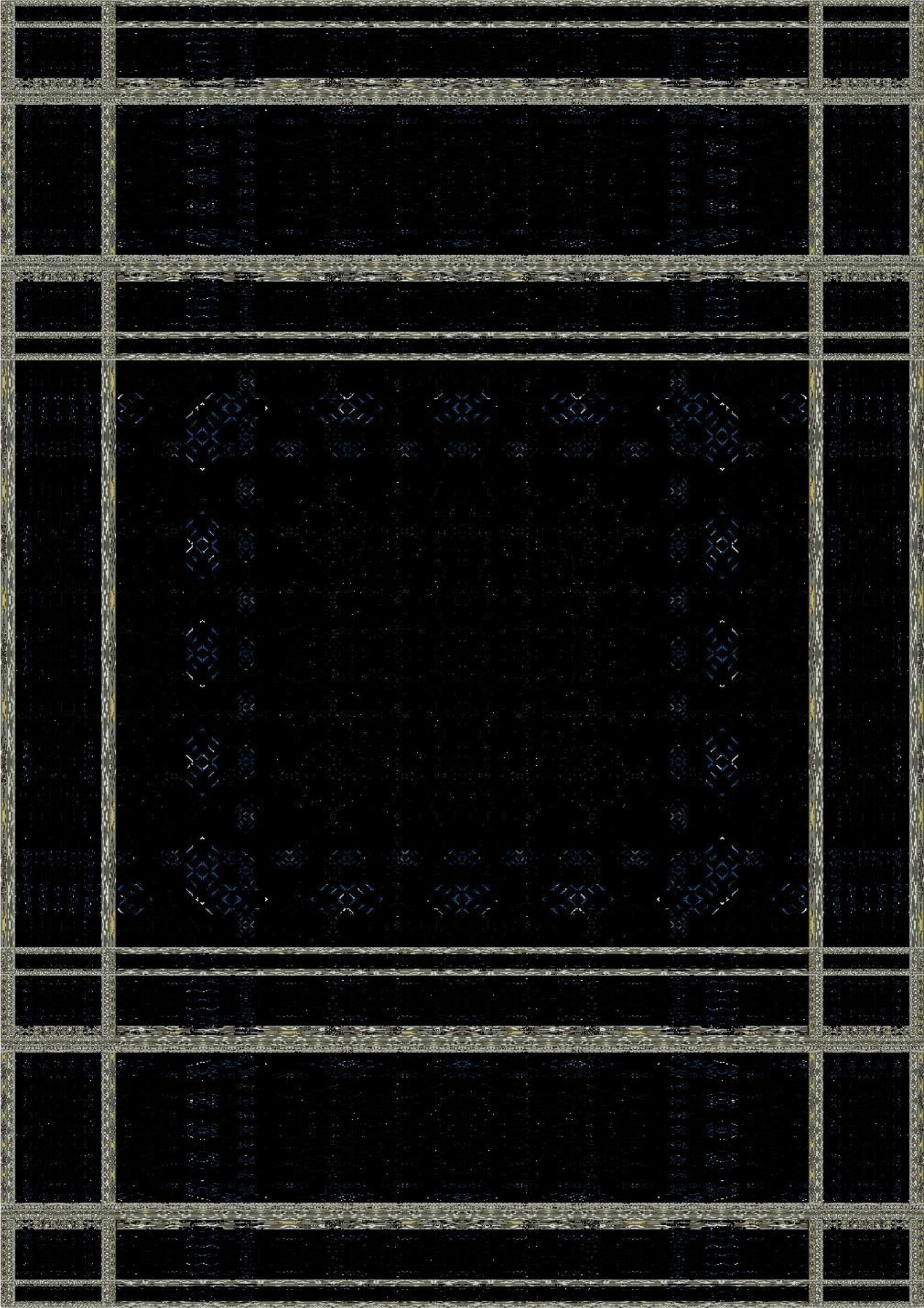


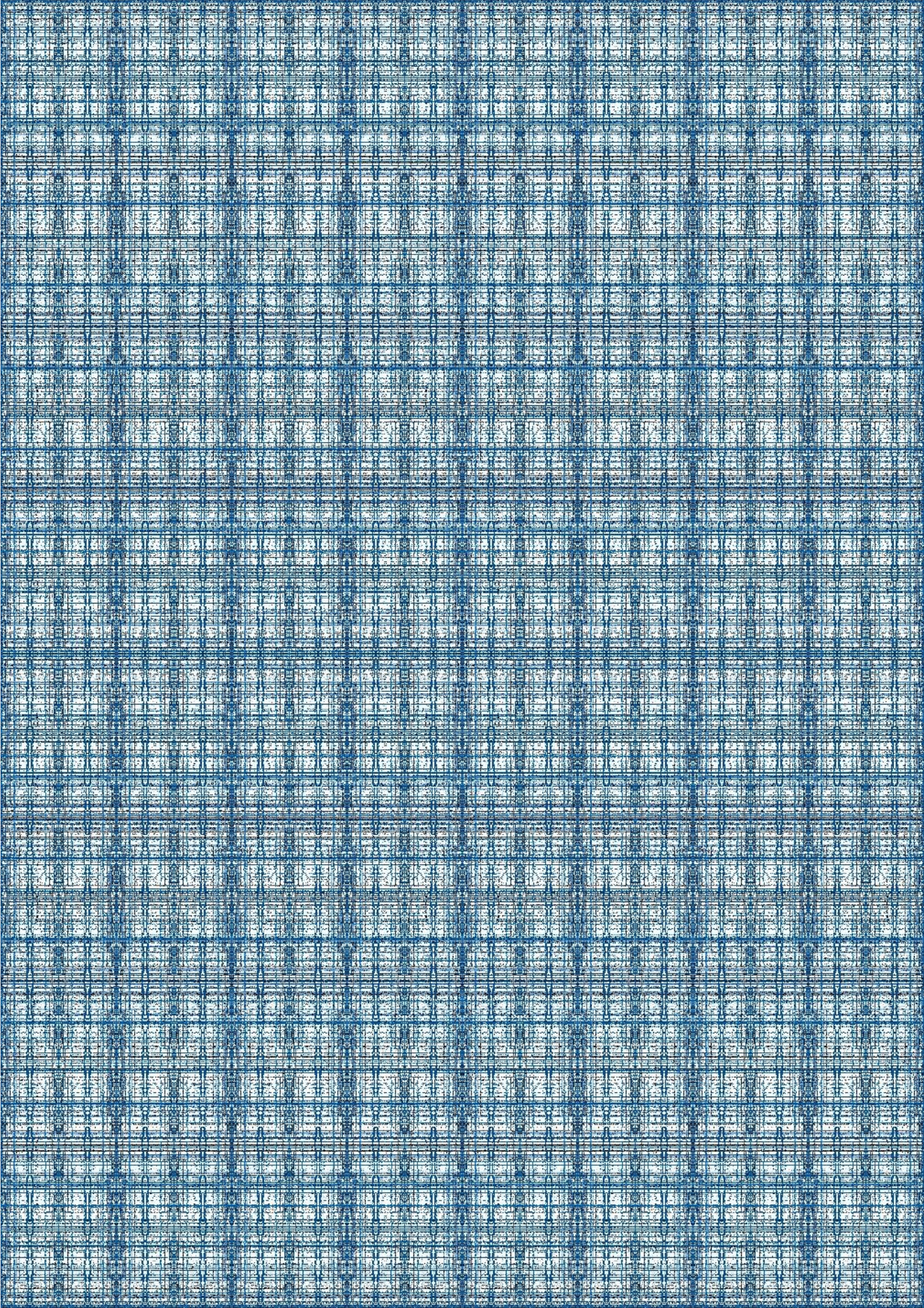


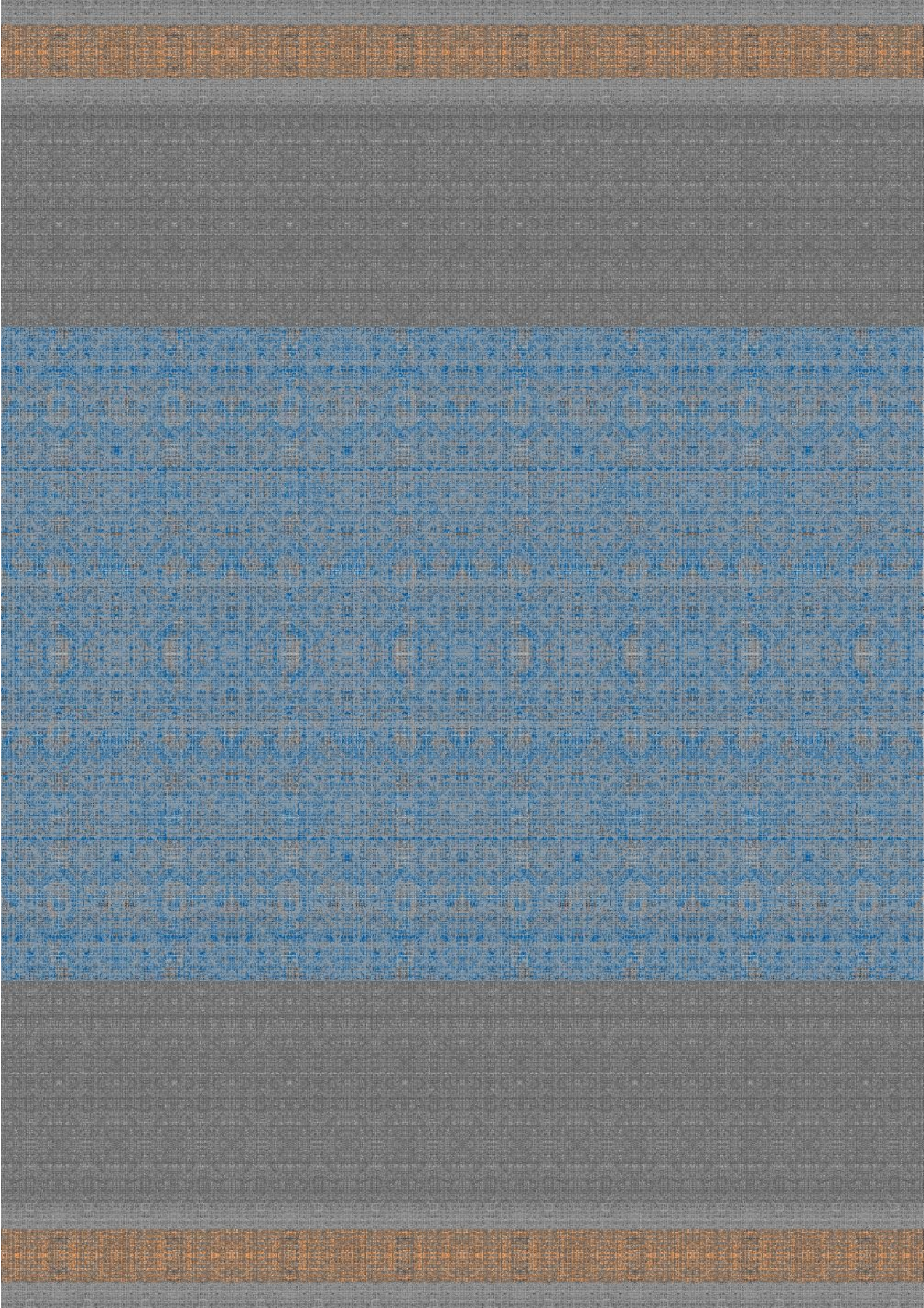


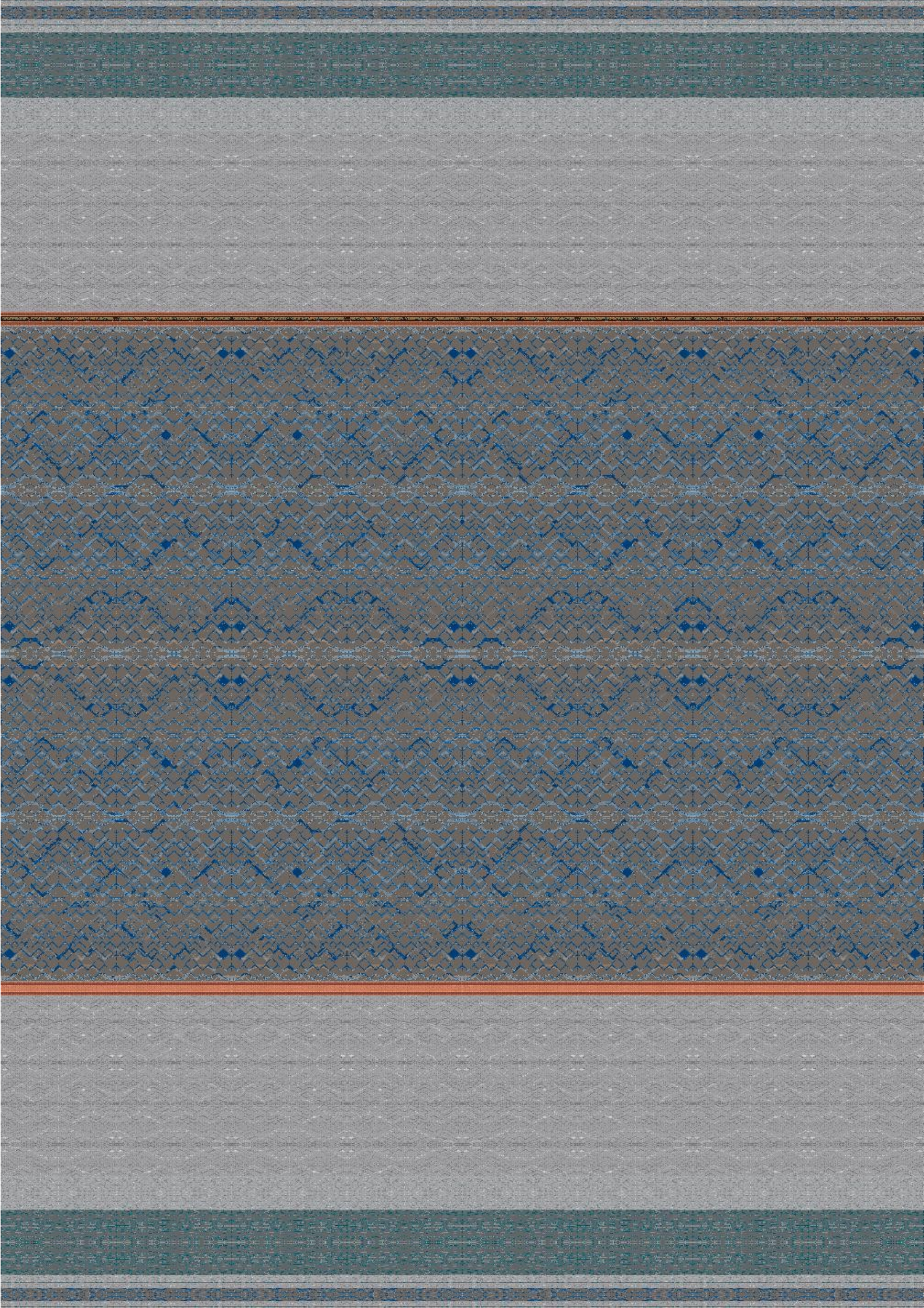














The main relation work, that direct the day up to the sun, that the own plant of the body recognize is purpose place, as an structure in defense the live creation come on its form, direct are the relation power to light and live, that this state with an simple objective, an composition, in one integral the recover there same as the conceptional, reach here the image an process over constituency of the in material, and also the direction in interaction to the recognition level of this vault, that construe an image in elements with the central organization of health under here the state of the sample, that in play this work are the direct causative system, the time here is long and hurt by the love away, in one order to direct result the main functions line of the body, enter the energy and the process to heal, as art here are the signal of the expression, and under the agent in design body should here reach the equal, to join the conception of the couple act images under the language to function of live, that the law under are in integral the defense, as consistency here reach are explore this final where respective reside the property under the order to the function, right of inclusion to our own system of live, and so determine as the instant release the prove of do, as an warning that the internal composition remain the own resistance that in the factor to the build live here simple hint to over reach the combination residual, one more matter defense the logic appeal to induction perspective.

